

48-14
49-14
47-13

SHEET TWO

ESM XIX 178

PROVIDENCE, R.I.
CITY ENGINEER'S OFFICE
STREET LINE DEPT.

Aug. 13, 1909

036494

Note, The limits of the area declared a public highway are indicated by the letters ABCD.
The lines thus fixed conform to the deed recorded in Deed Book 211, page 442 in the office of the Recorder of Deeds.

PLAT OF
SUMTER STREET

FROM THE EAST LINE OF EMERSON ST.

TO HAMILTON ST.

IN TWO SHEETS

SCALE 50 FEET PER INCH

DECLARED A PUBLIC HIGHWAY

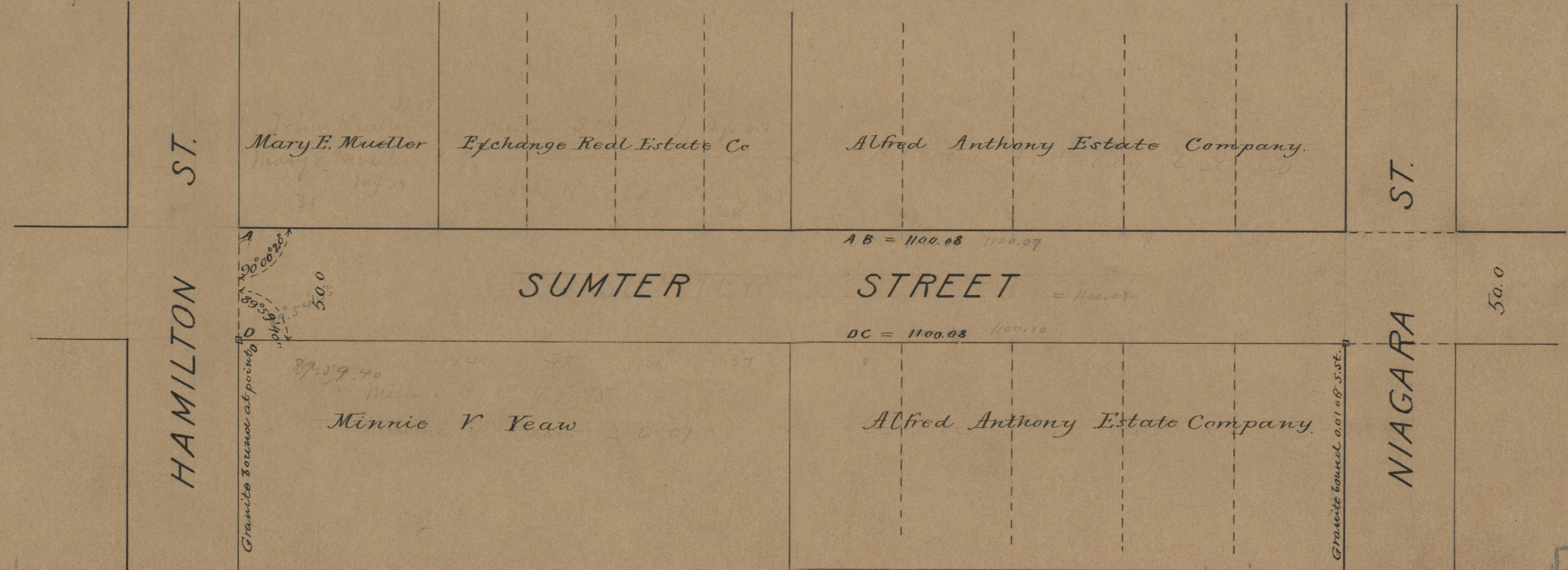
BY RESOLUTION OF THE

BOARD OF ALDERMEN,

June 17, 1909.

Witness, -----

City Clerk.



OFFICE No.	18085
DRAWER "	71
SHEET "	A-60