

PROVIDENCE, R.I.
CITY ENGINEER'S OFFICE
STREET LINE DEPT.

Aug. 13, 1909

036493

Note, The limits of the area declared a public highway are indicated by the letters A B C D.
The lines thus fixed conform to the deed recorded in Deed Book 211, page 442 in the office of the Recorder of Deeds.

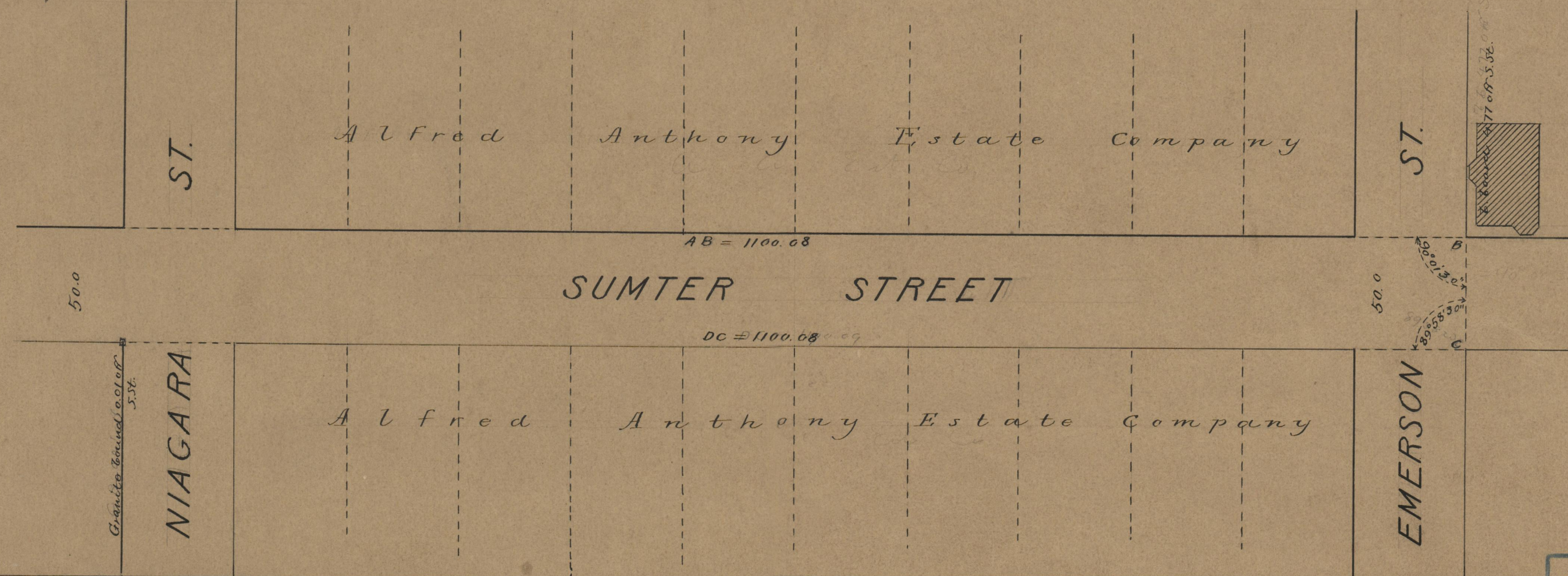
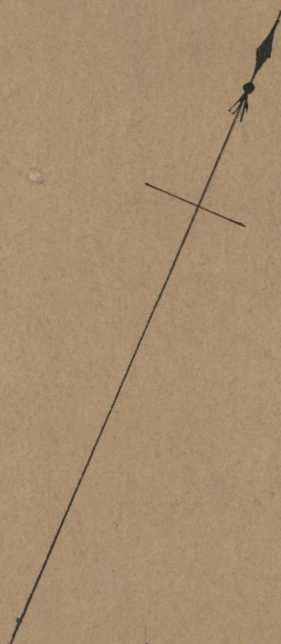
PLAT OF SUMTER STREET

FROM THE EAST LINE OF EMERSON ST.
TO HAMILTON ST.

IN TWO SHEETS
SCALE 50 FEET PER INCH
DECLARED A PUBLIC HIGHWAY
BY RESOLUTION OF THE
BOARD OF ALDERMEN

June 17, 1909.

Witness, _____
City Clerk.



OFFICE No.	18084
DRAWER	71
SHEET	A-59