

54-18
54-17

PROVIDENCE, R.I.
CITY ENGINEER'S OFFICE
STREET LINE DEPT.

April 2, 1909
036305

Note, The limits of the area declared a public highway are indicated by the letters ABCD.

The lines thus established conform to the deeds recorded in Deed Books 491, page 492, 494, pages 462, 472-3, 497 pages 26, 62-3, 174, 227, 498, pages 3, 147, 499, page 6, and 500, page 50 in the office of the Recorder of Deeds.

PLAT OF

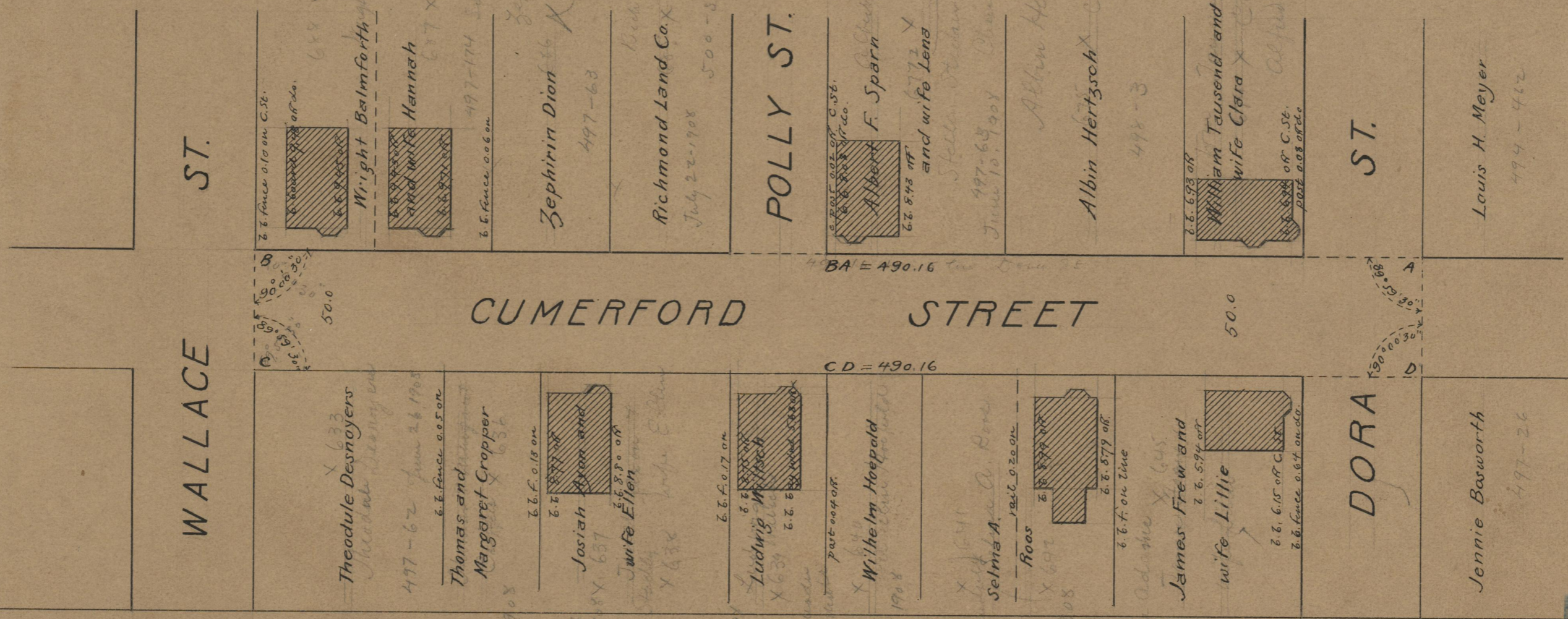
CUMERFORD STREET

FROM THE SOUTH LINE OF DORA ST.
TO WALLACE ST.
SCALE 50 FEET PER INCH.

DECLARED A PUBLIC HIGHWAY
BY RESOLUTION OF THE
BOARD OF ALDERMEN.

May 20, 1909.

Witness _____
City Clerk.



OFFICE NO.	18064
DRAWER	71
SHEET	A-57