

PROVIDENCE, R.I.
CITY ENGINEER'S OFFICE
STREET LINE DEPT.

April 2, 1909

036203
036303

Note, The limits of the area declared a public highway is indicated by the letters A B C D.

The lines thus established agree with the lines of the street as originally platted on Plat of the Plain Farm, West Providence By Cushing & Farnum, 1853. (Card 853, Records Office)

PLAT OF CUMERFORD STREET

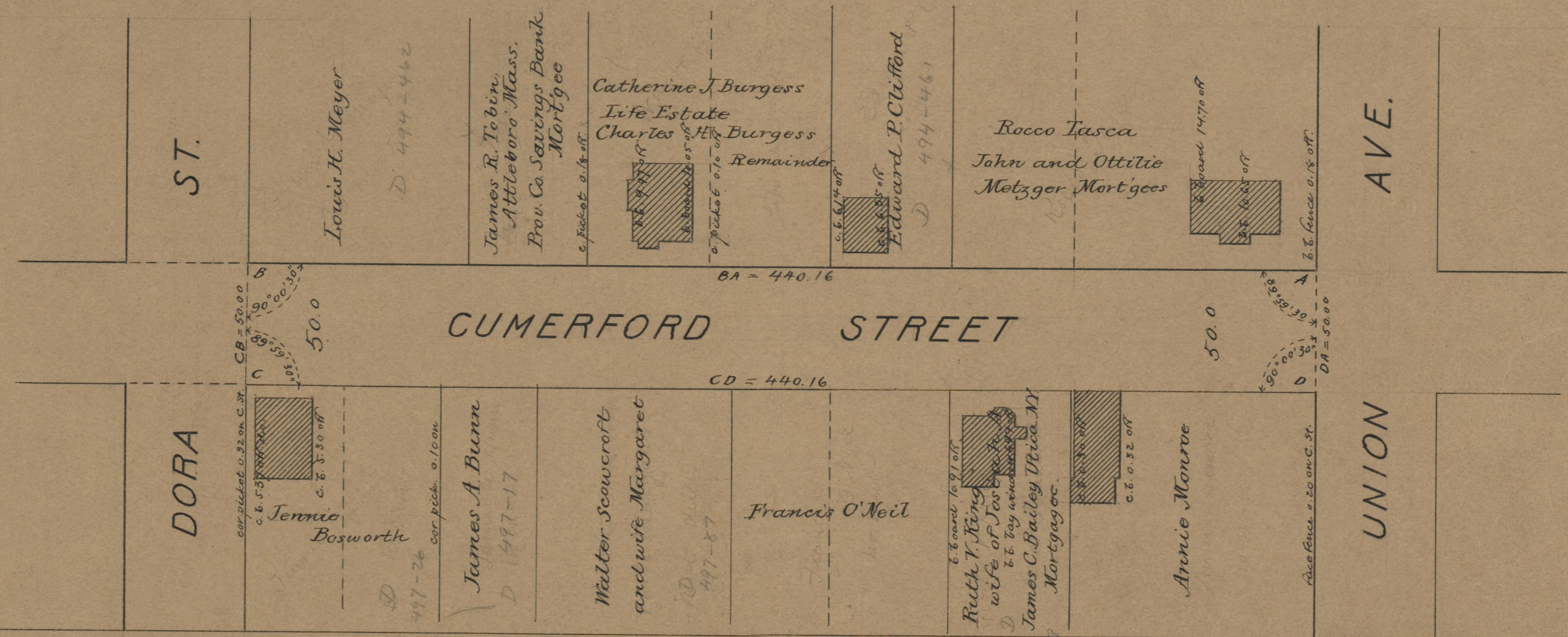
FROM UNION AVE. TO DORA ST.

SCALE 50 FEET PER INCH

DECLARED A PUBLIC HIGHWAY BY THE
BOARD OF ALDERMEN
(BY REASON OF TWENTY YEARS USE)



Witness, _____
City Clerk.



OFFICE No.	18063
DRAWER "	71
SHEET "	A-56