

PLAT OF
SIXTH STREET

FROM SUMMIT AVE. TO HOPE ST.

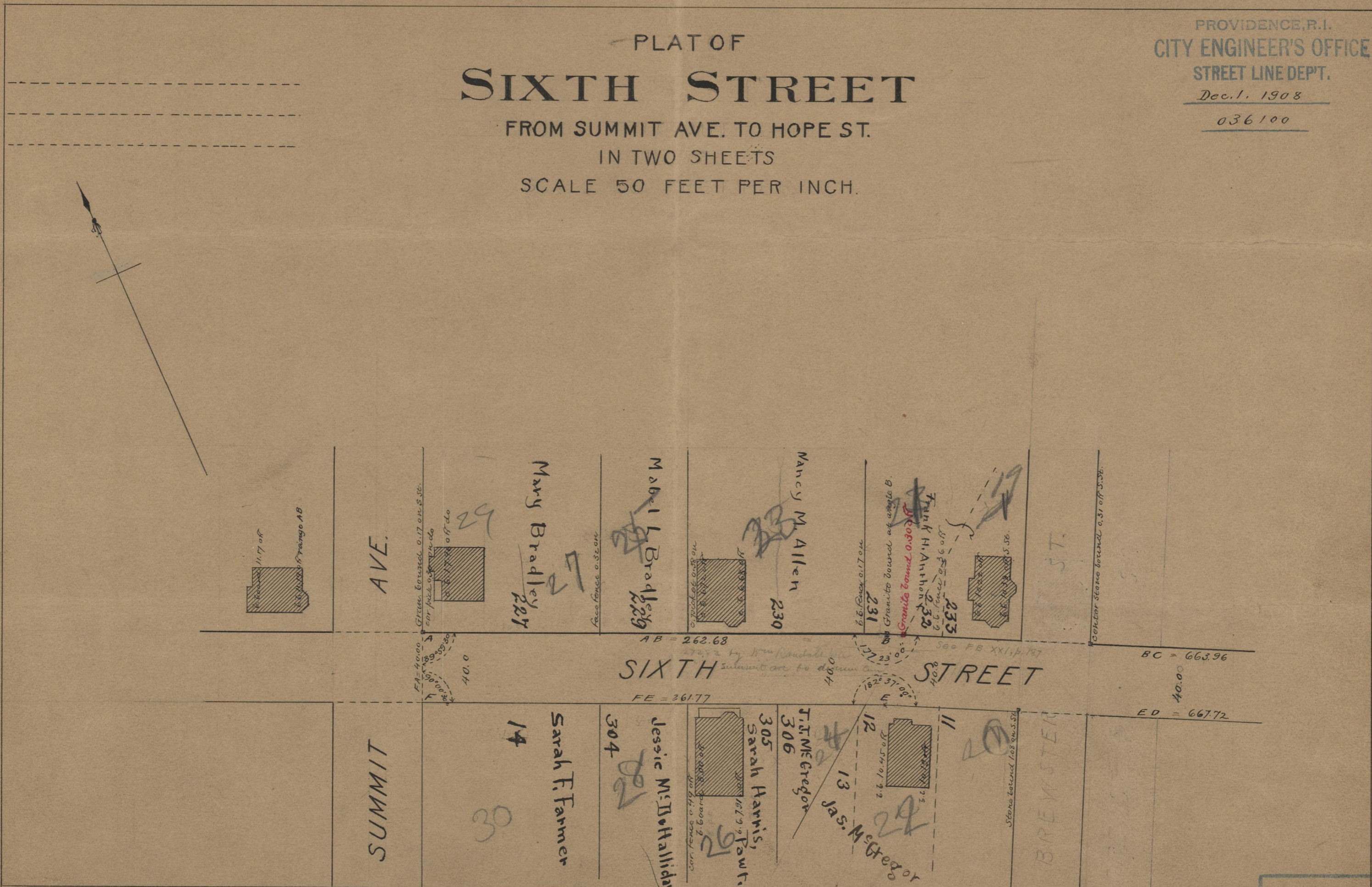
IN TWO SHEETS

SCALE 50 FEET PER INCH.

PROVIDENCE, R.I.
CITY ENGINEER'S OFFICE
STREET LINE DEPT.

Dec. 1, 1908

036100



AB = 262.68
BC = 663.96
ED = 667.72
FE = 261.77

OFFICE No. 17927
DRAWER " 71
SHEET " A-53