

47-16

F.B.B XXX 139

PROVIDENCE, R.I.
CITY ENGINEER'S OFFICE
STREET LINE DEPT.

Nov. 19, 1908

036090

PLAT OF TEMPLE STREET

FROM PUBLIC ST. TO POTTERS AVE.

SCALE 50 FEET PER INCH.

DECLARED A PUBLIC HIGHWAY

BY RESOLUTION OF THE

BOARD OF ALDERMEN

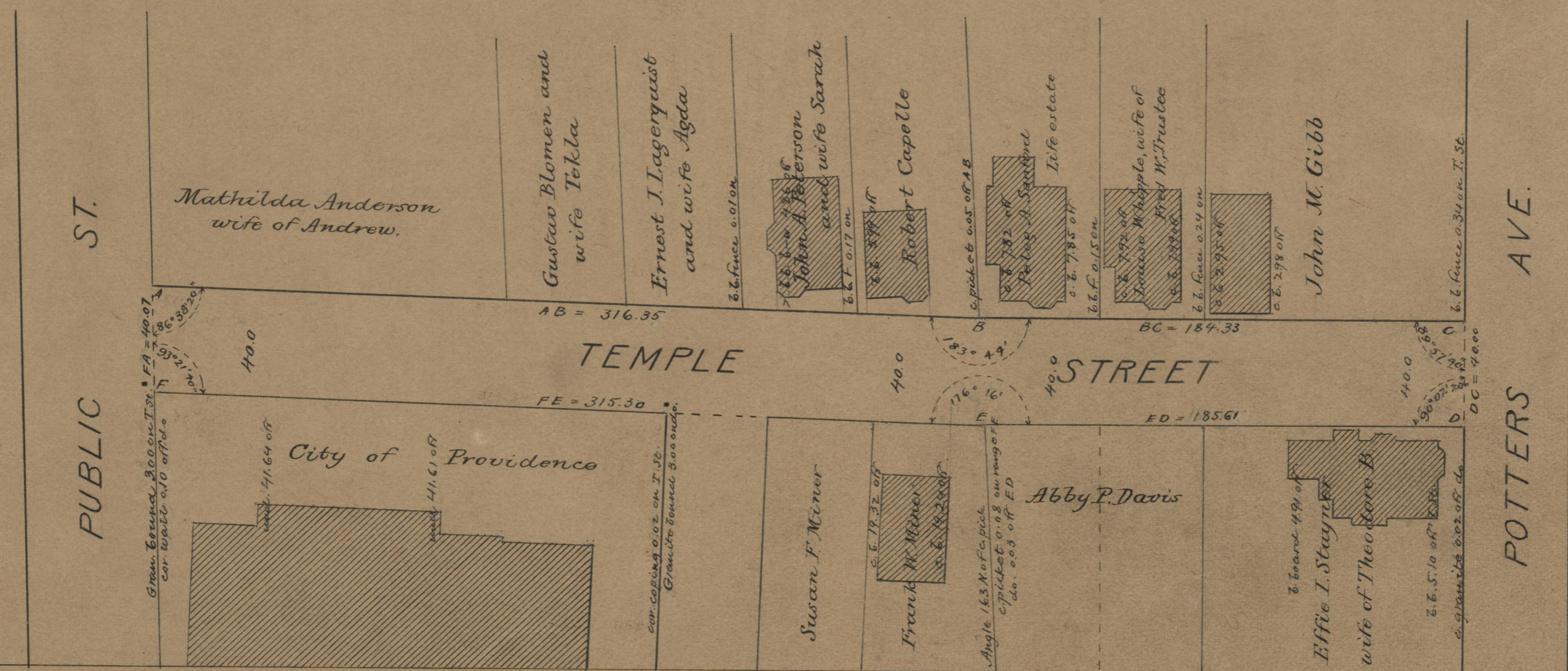
October 15, 1908.

Note, The limits of the area declared a public highway are indicated by the letters ABCDEF.
The lines thus defined conform to deed in Deed Book 216, page 105, in the office of the Recorder of Deeds.

316.35	316.35	315.30
184.33	184.33	185.61
185.61	500.68	500.71
315.30	500.71	
<u>21001.59</u>	<u>21001.59</u>	
500.795	500.795	

Witness, _____

City Clerk.



OFFICE No. 17922
 DRAWER " 71
 SHEET " A-5