

P.P. Curran
426 Bunsford

B

F.B.B XXX 133

PROVIDENCE, R.I.
CITY ENGINEER'S OFFICE
STREET LINE DEPT.

Nov. 9. 1908

036075

F.B. 1490-133

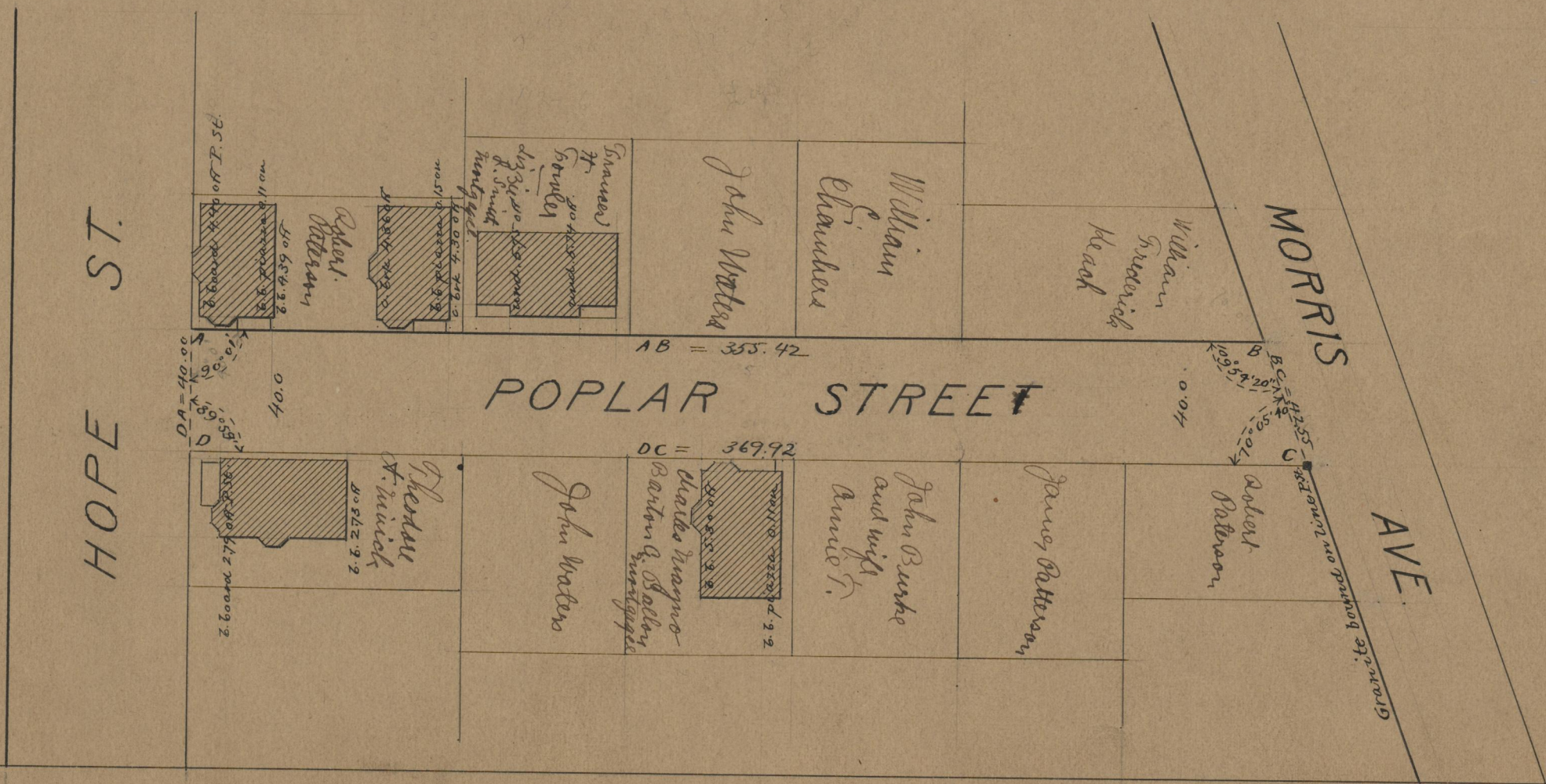
PLAT OF

POPLAR STREET

FROM HOPE ST. TO MORRIS AVE.

SCALE 50 FEET PER INCH.

355.42
369.92
2) 725.34
362.67



OFFICE No.	17920
DRAWER "	71
SHEET "	A-49