

PROVIDENCE, R.I.
CITY ENGINEER'S OFFICE
STREET LINE DEPT.
September 16, 1908

035958

Note, The limits of the area declared a public highway are shown by the letters A B C D.
The lines thus fixed, conform to the deed recorded in Deed Book 497, at page 163, in the Office of the Recorder of Deeds.

PLAT OF SAVOY STREET

FROM HOPE ST. TO MORRIS AVE.

SCALE 40 FEET PER INCH.

DECLARED A PUBLIC HIGHWAY
BY RESOLUTION OF THE
BOARD OF ALDERMEN

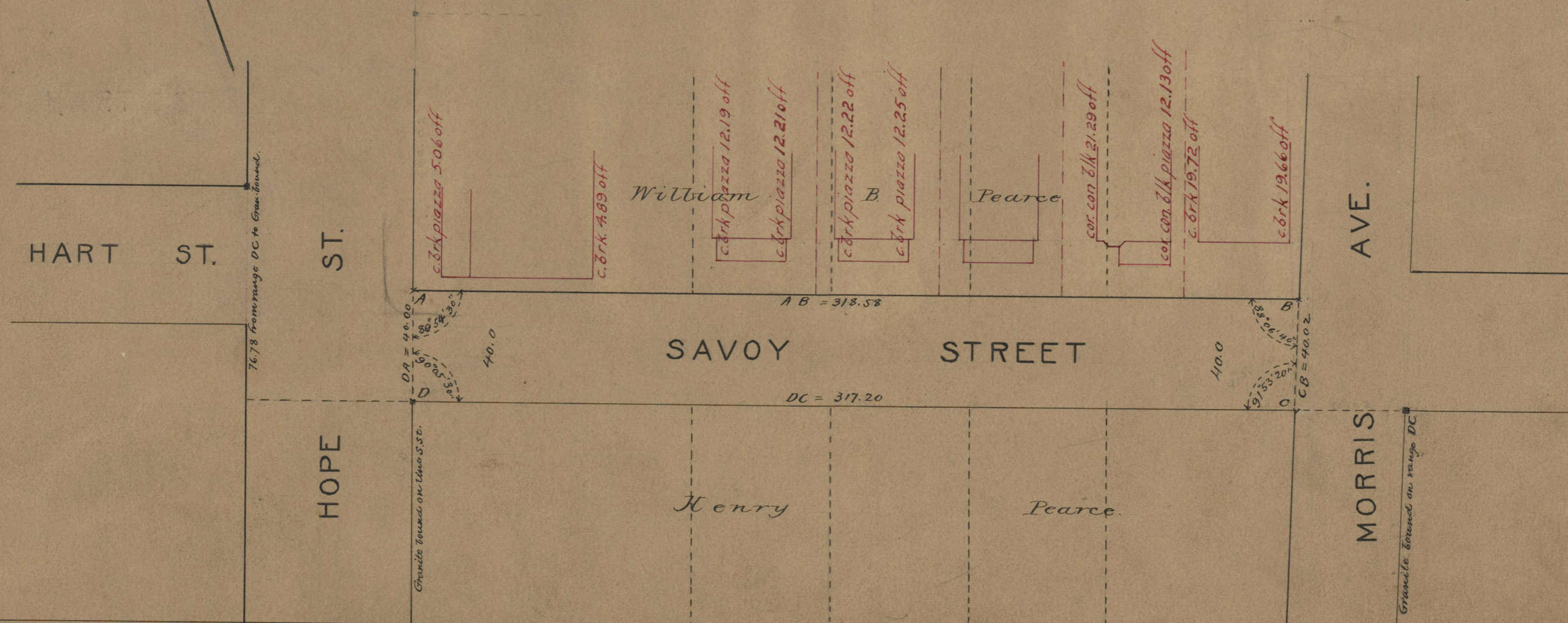
August 6, 1908.

318.58
317.20
635.78
317.89

318.58
317.20
635.78
317.89

Witness, _____

City Clerk.



OFFICE No. 17784
DRAWER " 71
SHEET " A - 44