

(SFN)
F.B.B. 1490-123-4-126

PROVIDENCE, R.I.
CITY ENGINEER'S OFFICE

STREET LINE DEPT.

July 31, 1908

035893

PLAT OF LARCH STREET

FROM CAMP ST. TO MORRIS AVE.

INTWO SHEETS,

SCALE 60 FEET PER INCH

ESTABLISHED AND DECLARED A PUBLIC HIGHWAY
BY RESOLUTION OF THE
BOARD OF ALDERMEN

September 3, 1908.

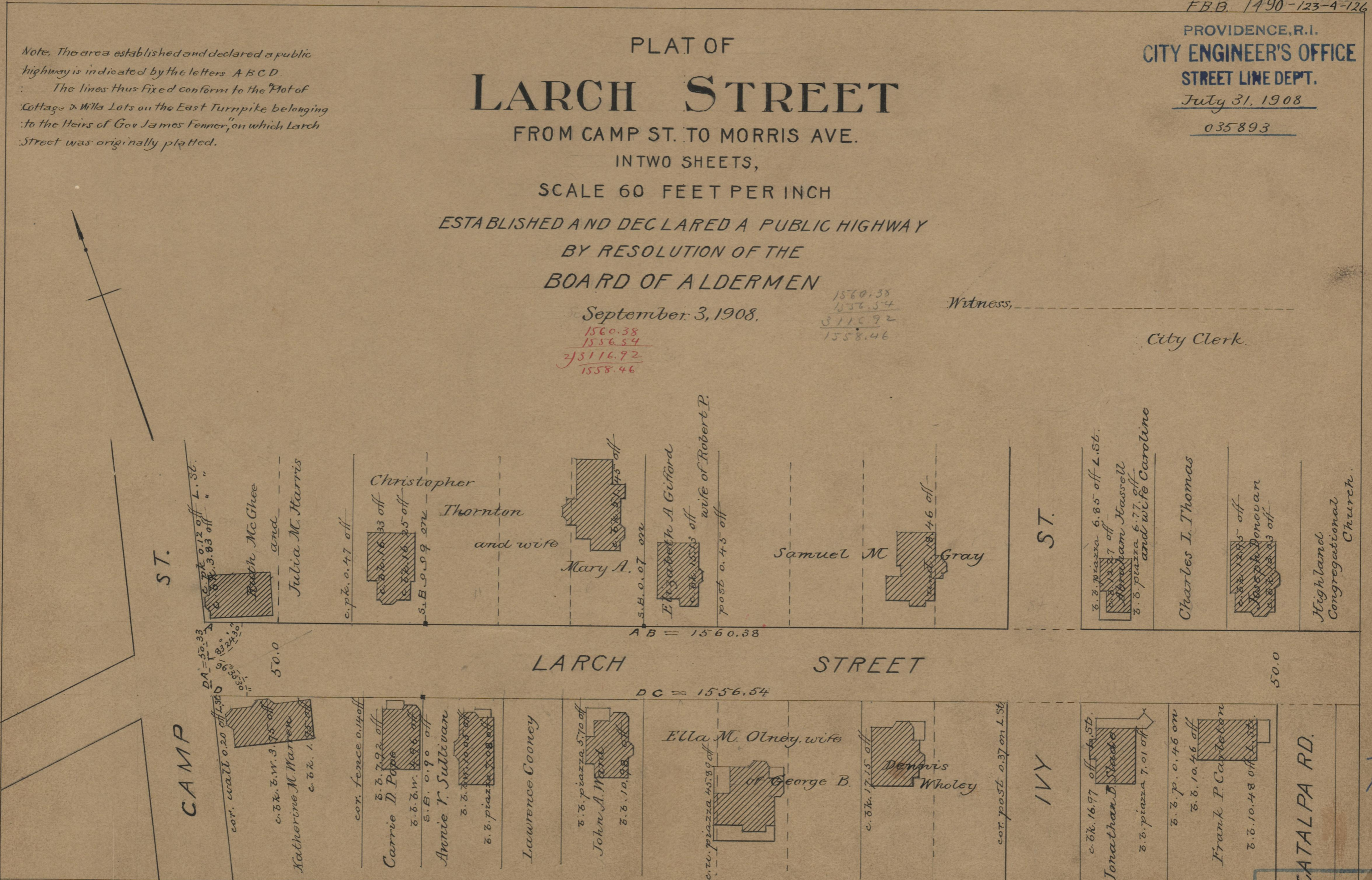
1560.38
1556.54
23116.92
1558.46

1560.38
1556.54
3116.92
1558.46

Witness, _____

City Clerk.

Note. The area established and declared a public highway is indicated by the letters A B C D.
The lines thus fixed conform to the Plat of Cottage & Milk Lots on the East Turnpike belonging to the Heirs of Gov James Fenner, on which Larch Street was originally platted.



DA = 50.33
DB = 3.83
DC = 1556.54
DD = 33.50

50.0

AB = 1560.38

DC = 1556.54

50.0

71
A-42

OFFICE No. 17779
DRAWER 71
SHEET A-42