

PROVIDENCE, R.I.  
CITY ENGINEER'S OFFICE  
STREET LINE DEPT.

July 31, 1908.

035891

Note, The lines of the two parcels declared a public highway are indicated by the letters ABCD and EFGH. These lines conform to the deeds recorded in Deed Books 397, page 150, and 439, pages 50 and 187, in the office of the Recorder of Deeds

# PLAT OF HANOVER STREET

FROM ELMWOOD AVE. TO DEXTER ST.

SCALE 60 FEET PER INCH.

DECLARED A PUBLIC HIGHWAY

BY RESOLUTION OF THE

BOARD OF ALDERMEN,

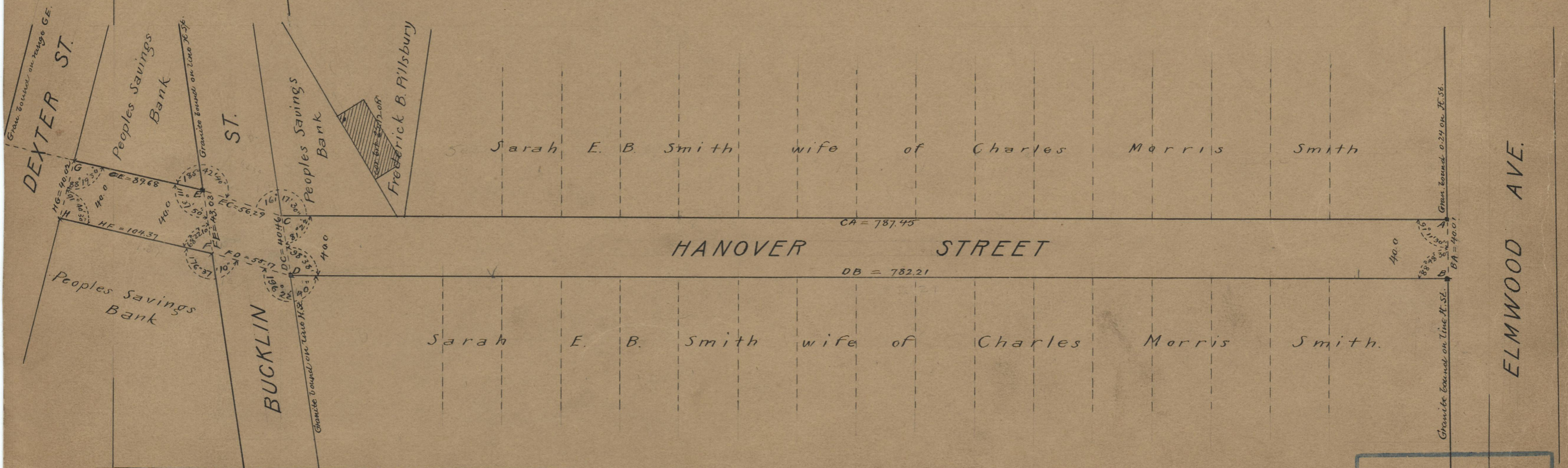
July 2, 1908.

89.68	104.37
787.45	782.21
877.13	886.58
886.58	
1763.71	
881.855	

89.68
787.45
104.37
782.21
1763.71
881.855

Witness, -----

City Clerk.



OFFICE No.	47778
DRAWER	71
SHEET	A-41