

PROVIDENCE, R.I.  
CITY ENGINEER'S OFFICE  
STREET LINE DEPT.

035845

July 7, 1908.

# PLAT OF TELL STREET

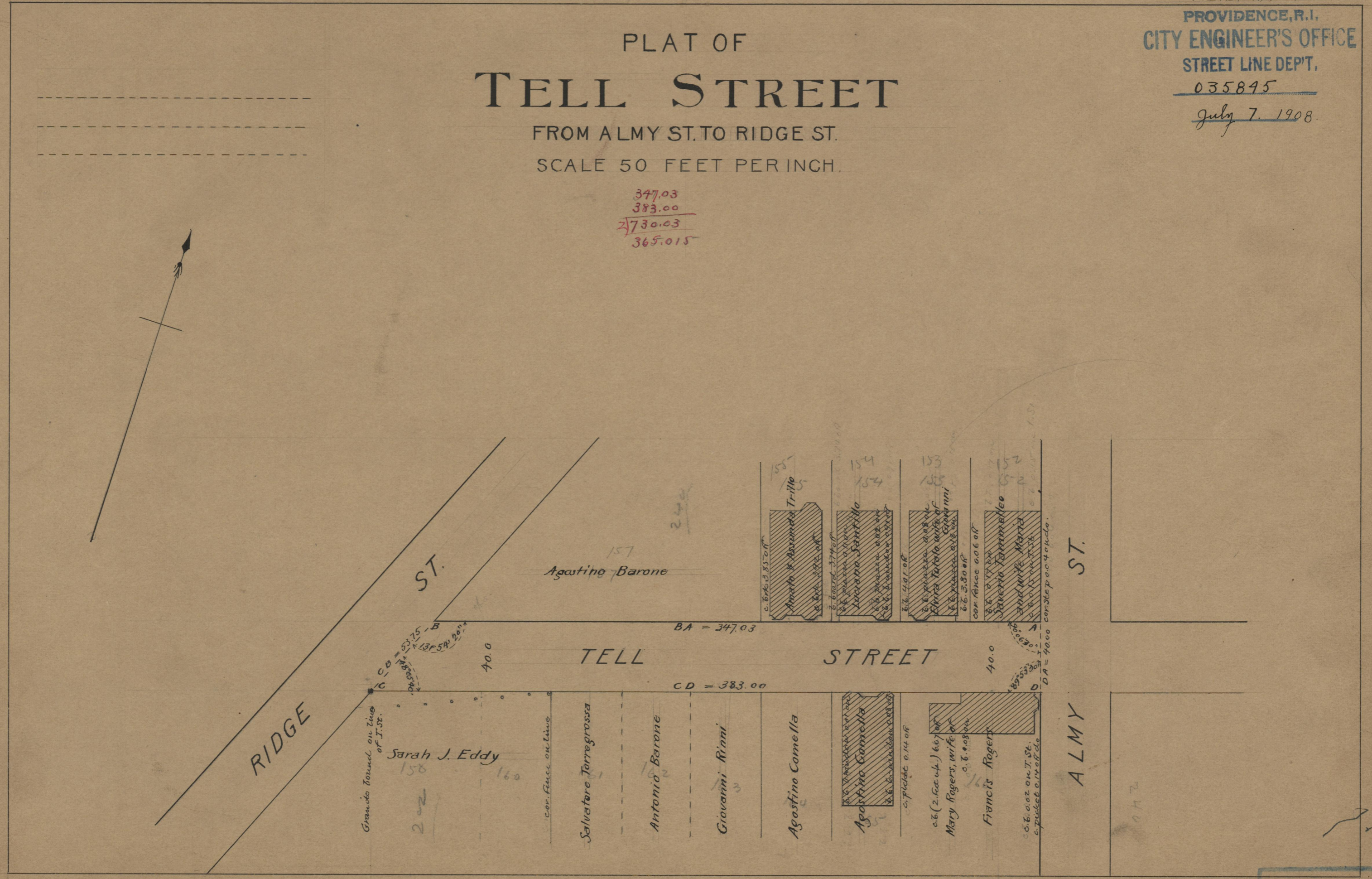
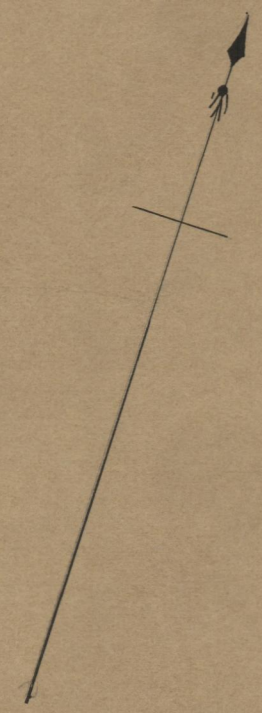
FROM ALMY ST. TO RIDGE ST.

SCALE 50 FEET PER INCH.

347.03  
383.00  

---

730.03  
365.015



Gravels found on line of T. St.

Sarah J. Eddy

cor. line on line

Salvatore Torregrossa

Antonio Barone

Giovanni Rinni

Agostino Camella

Agostino Camella

Mary Rogers, wife of

Francis Rogers

Francis Rogers

Agostino Barone

Amalia Assunta Trillo

Luciano Santillo

Elvira Tofano wife of Giovanni

Stefano Tommelio and wife MARY

ST.

TELL STREET

ALMY

ST.

OFFICE No. 17758  
DRAWER 71  
SHEET A-38