

PLAT OF MORRIS AVENUE

FROM SESSIONS ST. TO SAVOY ST.

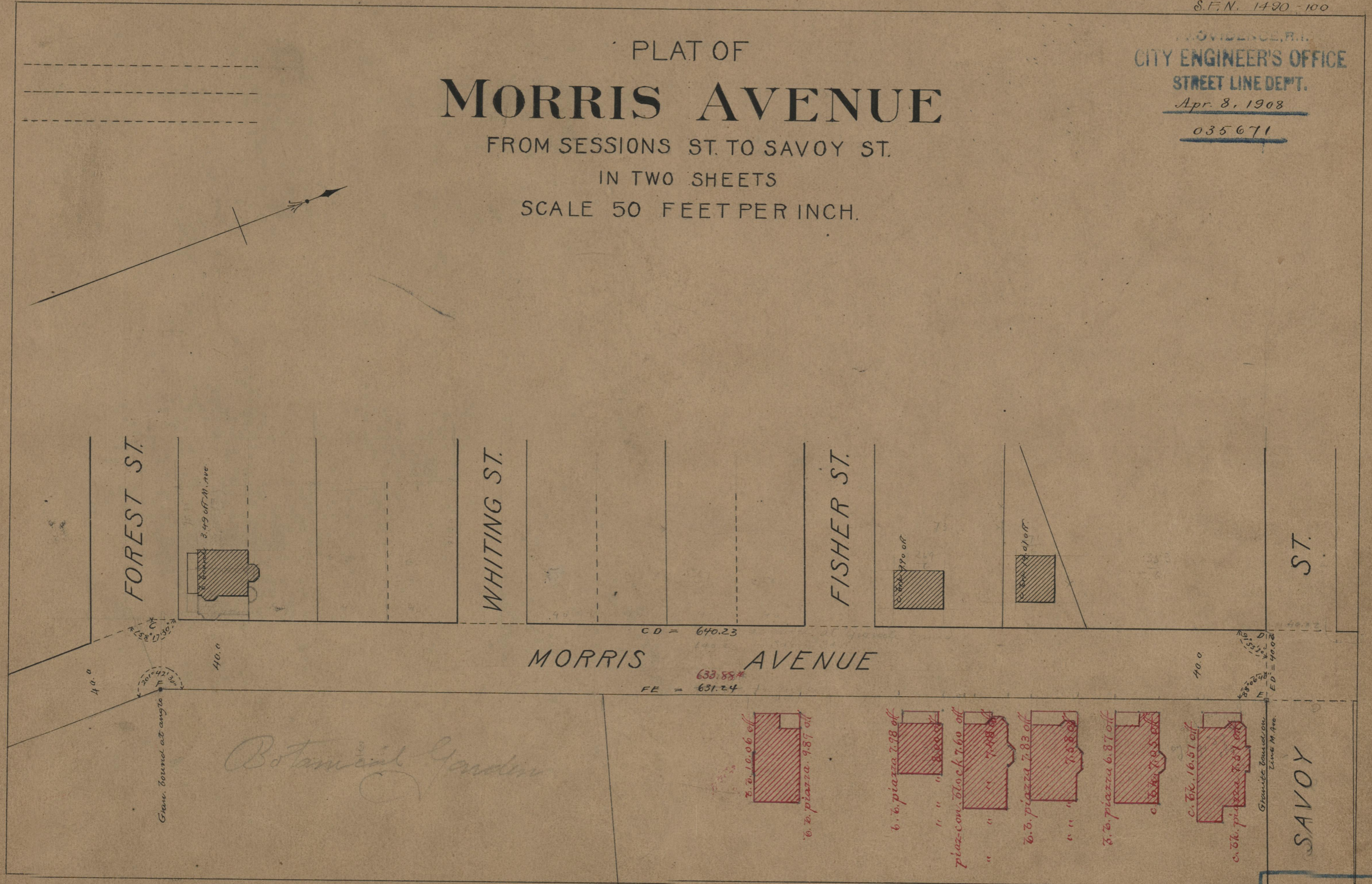
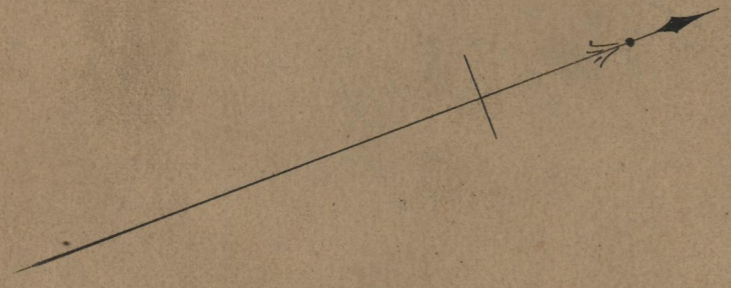
IN TWO SHEETS

SCALE 50 FEET PER INCH.

PROVIDENCE, R.I.
CITY ENGINEER'S OFFICE
STREET LINE DEPT.

Apr. 8, 1908

035671



FOREST ST.

WHITING ST.

FISHER ST.

ST.

MORRIS AVENUE

SAVOY

Gran. bound. at angle

Botanical Garden

CD = 640.23

FE = 631.24

7.2.10.06 off
7.2.10.06 off

6.6.10.98 off
" " 8.80 off

piaz-con. block 7.60 off
" " 7.48 off

6.6.10.98 off
" " 7.58 off

6.6.10.98 off
" " 7.05 off

6.6.10.98 off
6.6.10.98 off

Granite bound. on
Lins M Ave.

OFFICE No. 17429
DRAWER 71
SHEET A-31