

PROVIDENCE, R.I.  
CITY ENGINEER'S OFFICE  
STREET LINE DEPT.

April 6, 1908

035667

Note, The limits of the area declared a public highway are indicated by the letters A B C D E F G H.

The lines thus defined agree with the "Moses Brown Farm Plat" on Card 629 in the office of the Recorder of Deeds. See also Deed Book 365, page 270 and Deed Book 488, page 235.

PLAT OF  
**PRESIDENT AVENUE**  
FROM WESTERLY LINE OF WAYLAND AVE. TO COLE AVE.  
SCALE 60 FEET PER INCH.

DECLARED A PUBLIC HIGHWAY  
BY RESOLUTION OF THE  
BOARD OF ALDERMEN,  
March 19, 1908.

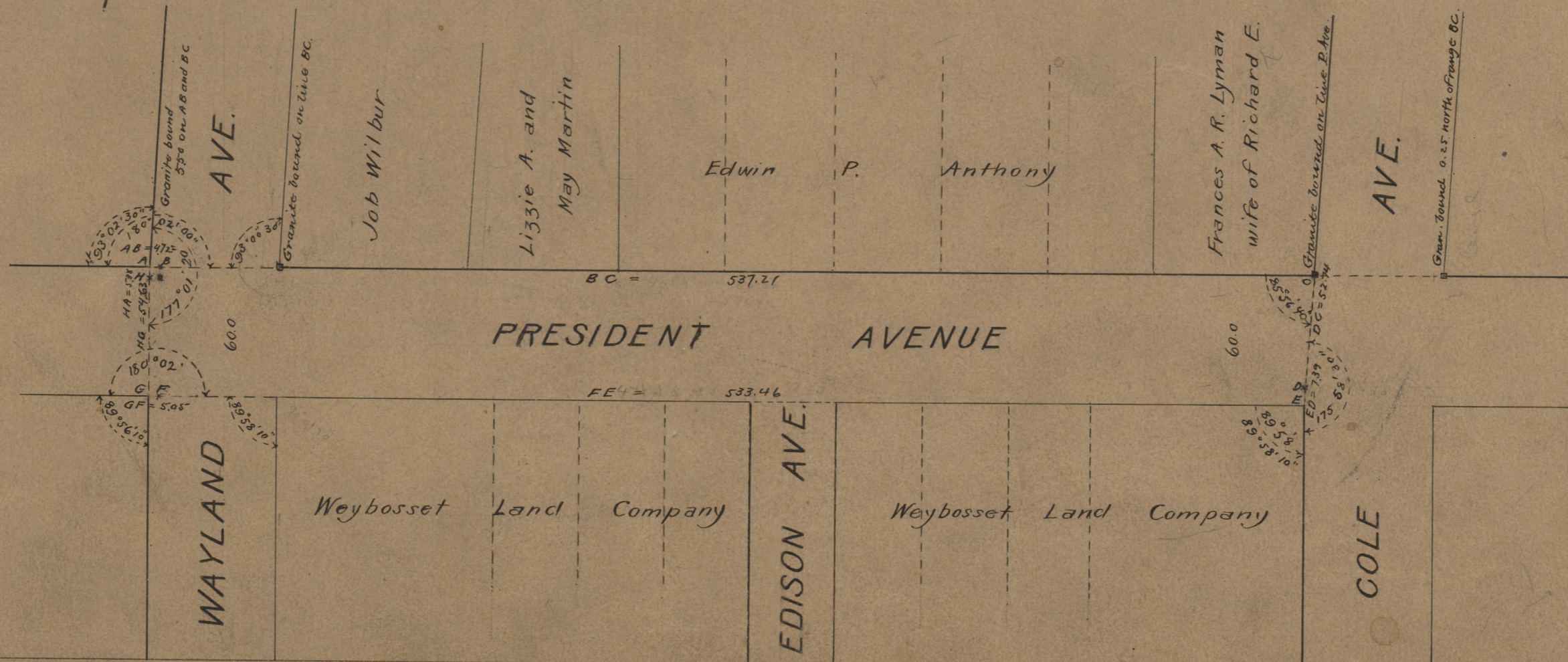
537.21	537.21
533.46	533.46
1070.67	+ 9.77
535.335	
4.881	
540.220	

537.21
533.46
4.72
5.05
2)1080.44
540.22

Witness, \_\_\_\_\_

City Clerk.



71  
A-29

OFFICE No.	17719
DRAWER	71
SHEET	A-29