

PROVIDENCE, R.I.
CITY ENGINEER'S OFFICE
STREET LINE DEPT.
Dec 20, 1907

035497

Note, The area declared a public highway
is indicated by the letters A, B, C and D.
The lines conform to deeds in Deed
Book 493, at pages 2, 3 and 6, in the office
of the Recorder of Deeds.

PLAT OF CURTIS STREET

FROM BOSWORTH ST. TO PELHAM ST.

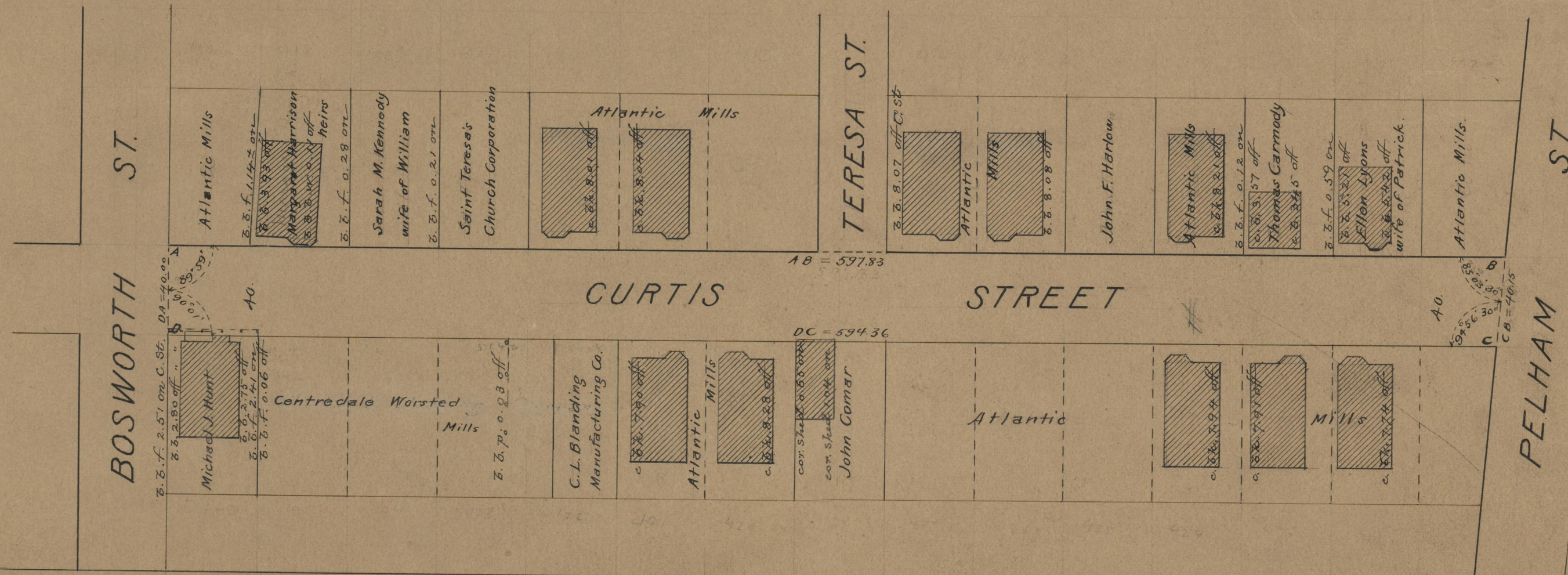
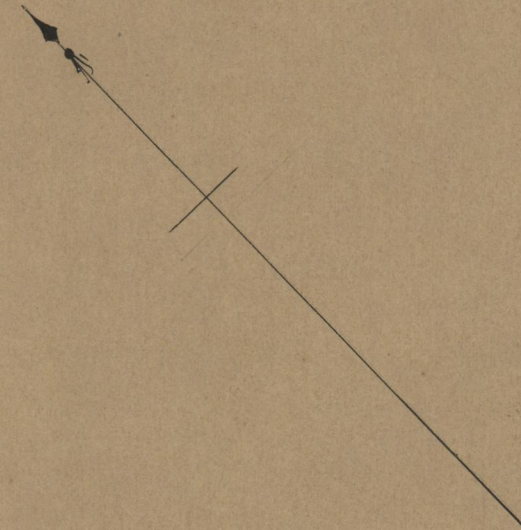
SCALE 50 FEET PER INCH.

DECLARED A PUBLIC HIGHWAY
BY RESOLUTION OF THE
BOARD OF ALDERMEN
November 21, 1907.

597.83
594.36
2/1192.19
596.095 = 596.10

Witness -----

City Clerk



BOSWORTH ST.

TERESA ST.

PELHAM ST.

CURTIS STREET

OFFICE No. 17636
DRAWER " 71
SHEET " A-26