

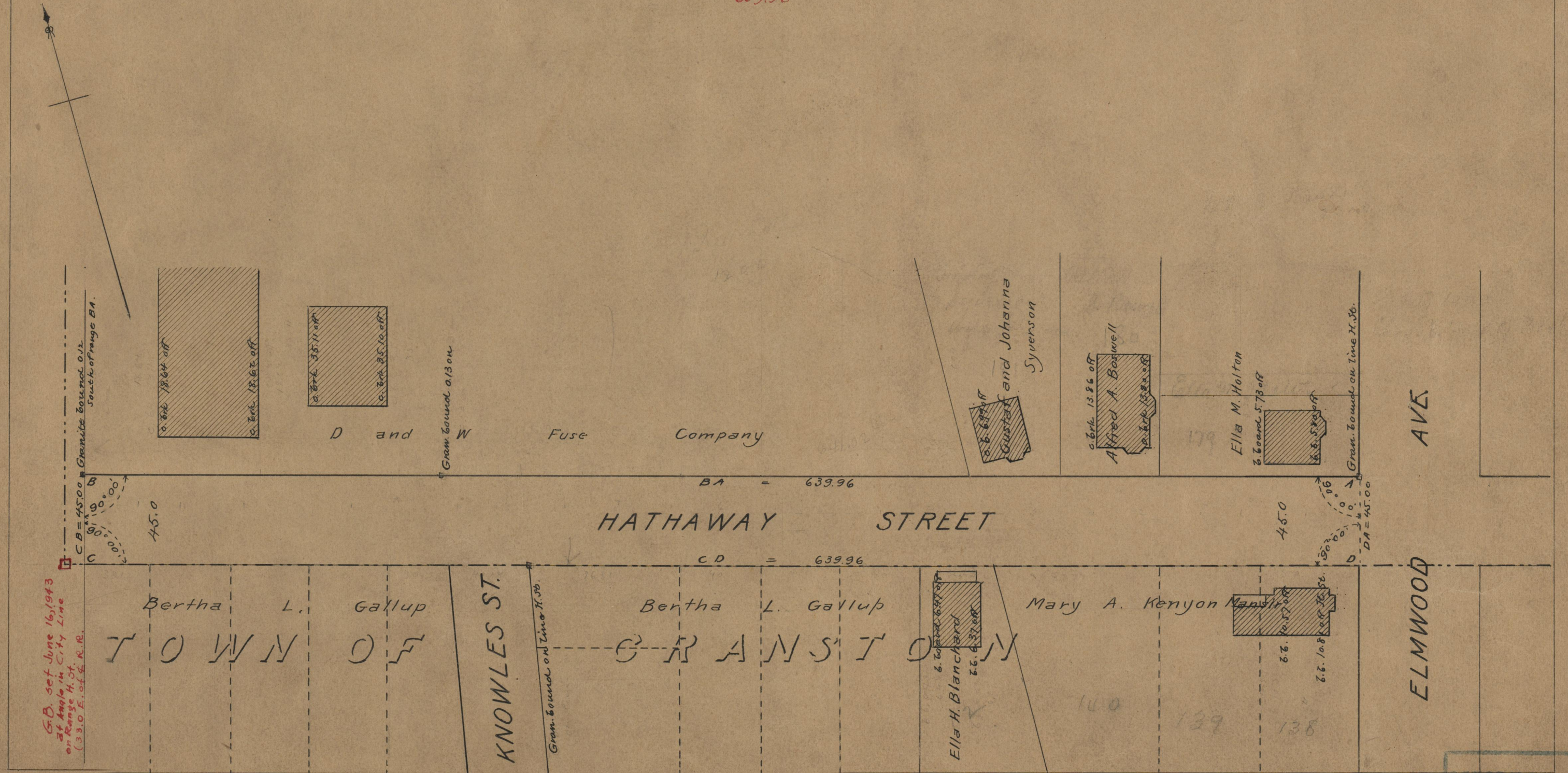
PROVIDENCE, R.I.  
CITY ENGINEER'S OFFICE  
STREET LINE DEPT.  
December 12, 1907

035473

# PLAT OF HATHAWAY STREET

FROM ELMWOOD AVE.  
TO ITS WESTERLY TERMINATION  
SCALE 50 FEET PER INCH.

639.96



G.B. set June 16, 1903  
at Angle in City Line  
on Range H. 36.  
(33.0 E. of & N. B.)

OFFICE No. 17621  
DRAWER " 71  
SHEET A-25