

PLAT OF WISDOM AVENUE

FROM ACADEMY AVE. TO ALTON ST.

IN TWO SHEETS

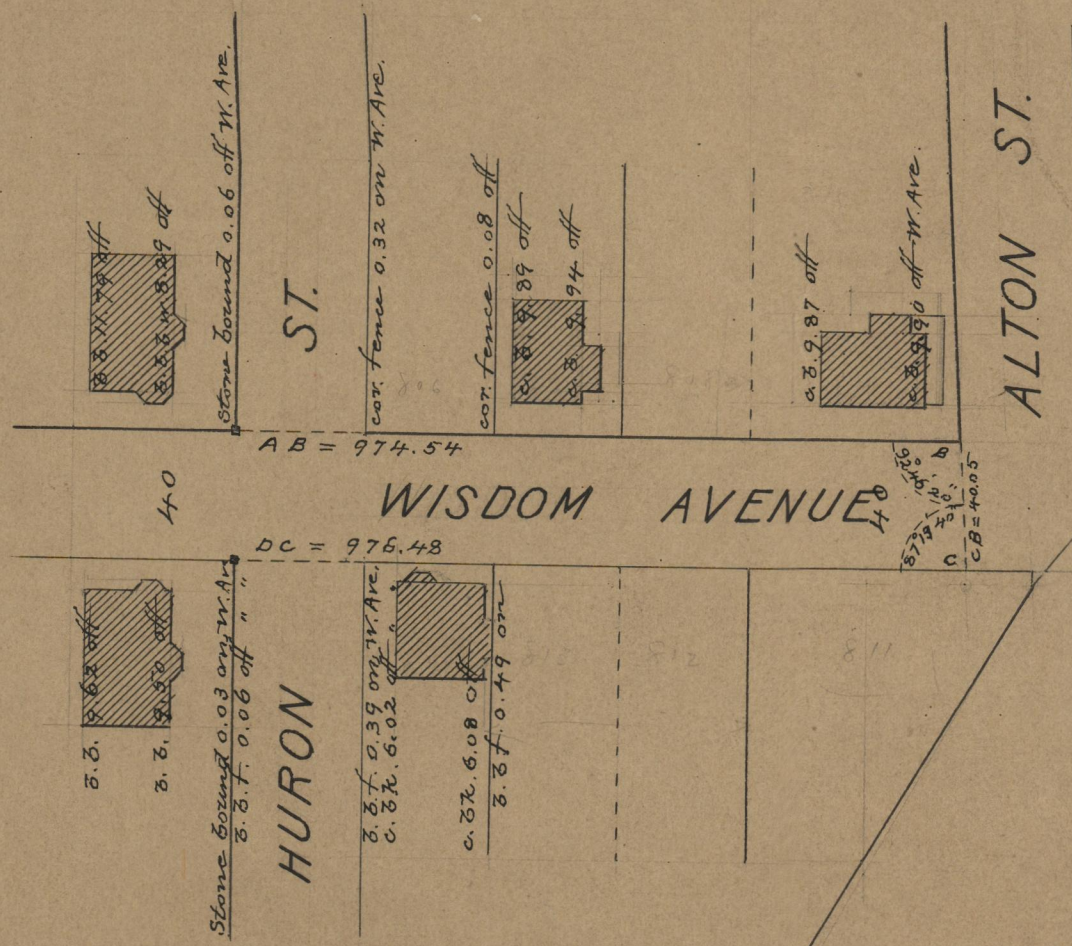
SCALE 60 FEET PER INCH.

PROVIDENCE, R.I.
CITY ENGINEER'S OFFICE
STREET LINE DEPT.

Dec. 2, 1907

035448

F.B.B.



OFFICE No.	17579
DRAWER	71
SHEET	A-23