

Deed Books 477-335, 480-289, 491-64

PROVIDENCE, R.I.
CITY ENGINEER'S OFFICE
STREET LINE DEPT.

November 19, 1907

035383

Note, The area declared a public highway is indicated by the letters A B C and D.
The lines conform to deeds in Deed Books 477, page 335, 480, page 469 and 491, page 64, in the office of the Recorder of Deeds

PLAT OF FAIRMOUNT AVENUE

FROM MT. PLEASANT AVE. TO LEAH ST.

SCALE 50 FEET PER INCH.

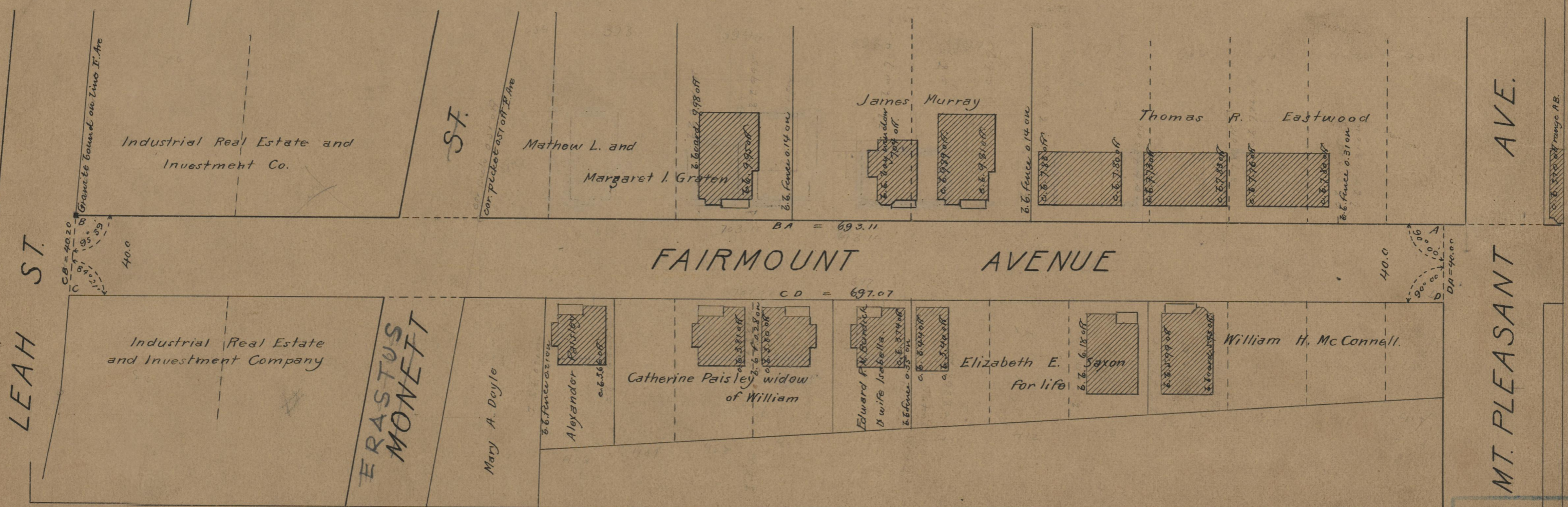
DECLARED A PUBLIC HIGHWAY
BY RESOLUTION OF THE
BOARD OF ALDERMEN

October 17, 1907.

693.11
697.07
7) 1390.18
693.11

Witness _____

City Clerk.



OFFICE No. 17562
DRAWER " 71
SHEET " A-21