

CITY ENGINEER'S OFFICE.
CITY PROPERTY DEPT.

November 28, 1906.

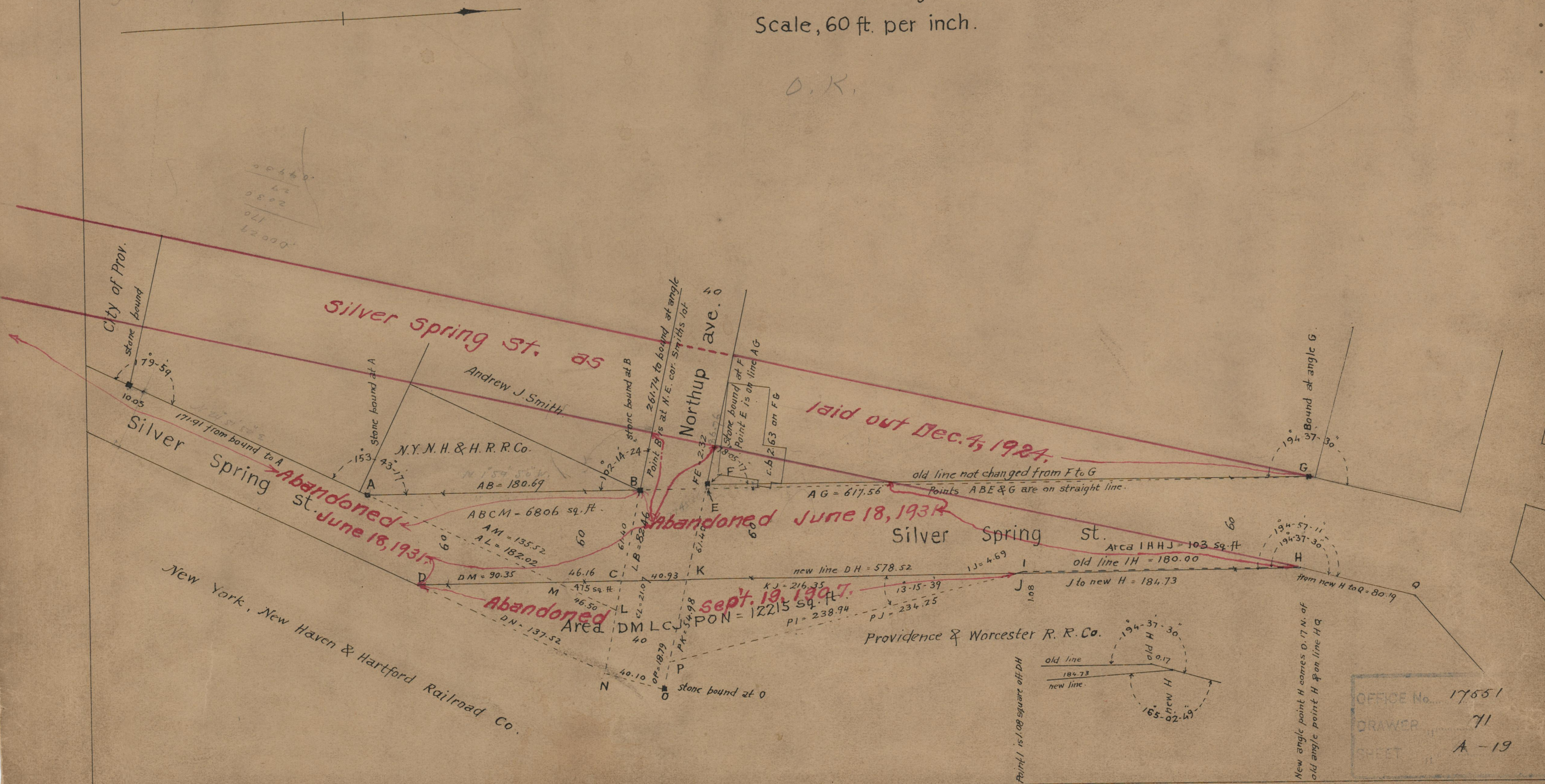
034779

Note, The area declared to be useless
for highways and abandoned as such is
indicated by the letters DMLCJPON.

This action taken Sept 19, 1907
by the City

Map
showing changes in line of
Silver Spring st.
Scale, 60 ft. per inch.

O.K.



00460
42
2030
170
1200

Abandoned June 16, 1935
Silver Spring St.

Abandoned June 18, 1934
Silver Spring St.

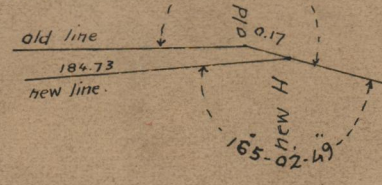
Sept. 19, 1907

New York, New Haven & Hartford Railroad Co.

Providence & Worcester R. R. Co.

Point I is 1.08 square off DH

New angle point H comes 0.17 N. of
old angle point H on line H Q



OFFICE No. 17551
DRAWER 71
SHEET A-19