

PROVIDENCE, R.I.  
CITY ENGINEER'S OFFICE  
STREET LINE DEPT.

July 25, 1907

035153

Note, The limits of the area declared a public highway are indicated by the letters A, B, C and D.

The lines conform to the deeds in Deed Books 366, page 323, 406, page 153, 467, page 38, 479, page 241, 486, pages 366 and 374, and 488, page 235, in the office of the Recorder of Deeds.

# PLAT OF LAUREL AVENUE

FROM BLACKSTONE BOULEVARD TO LORRAINE AVE.

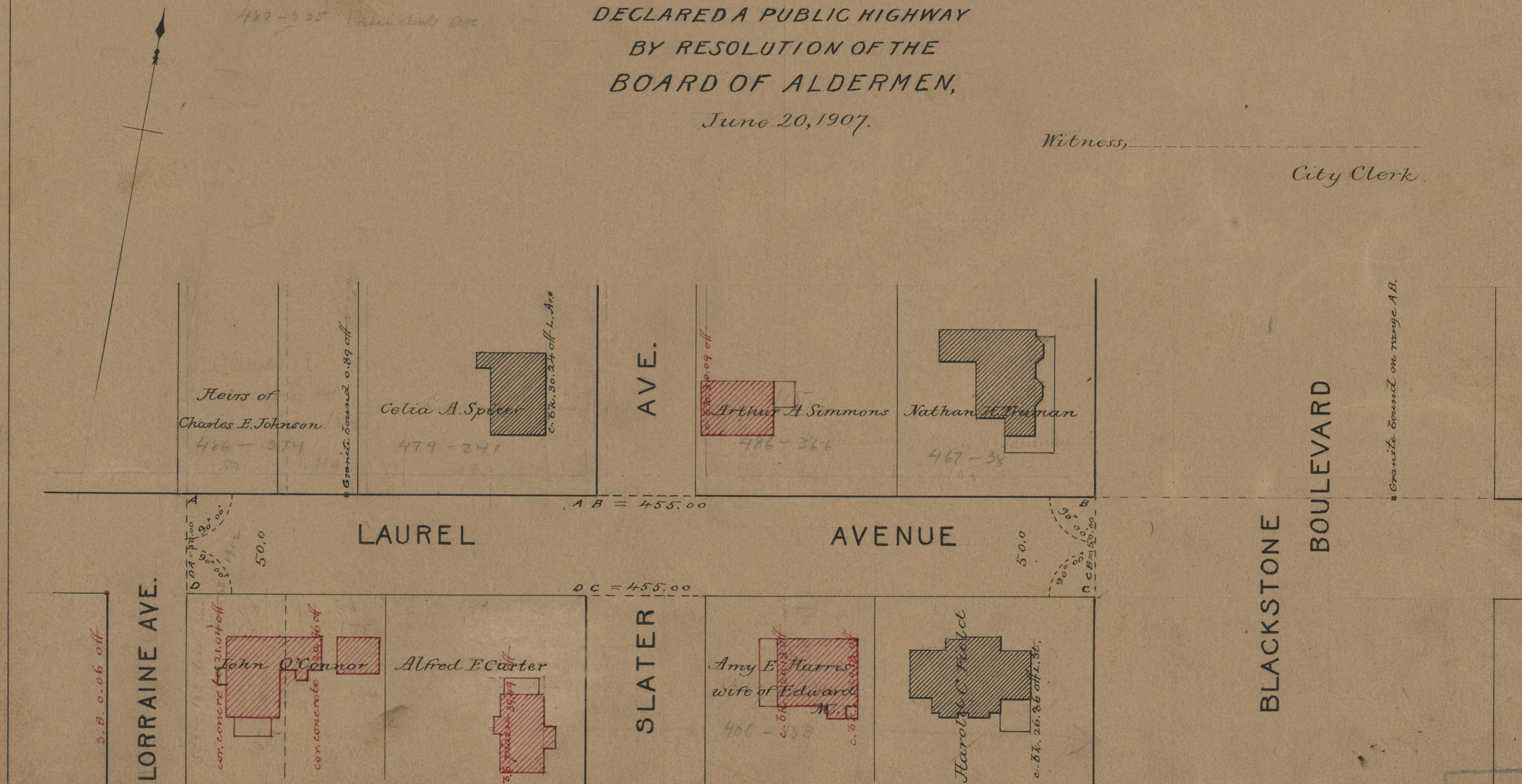
SCALE 50 FEET PER INCH.

DECLARED A PUBLIC HIGHWAY  
BY RESOLUTION OF THE  
BOARD OF ALDERMEN,

June 20, 1907.

Witness, \_\_\_\_\_

City Clerk.



71  
A-18

OFFICE No. 17488  
DRAWER 71  
SHEET A-18