

PROVIDENCE, R.I.  
CITY ENGINEER'S OFFICE  
STREET LINE DEPT.

July 25, 1907

035151

Note, The limits of the area declared a public highway are indicated by the letters A B C D.  
The lines conform to the deed in Deed Book 211, at page 442, in the office of the Recorder of Deeds.

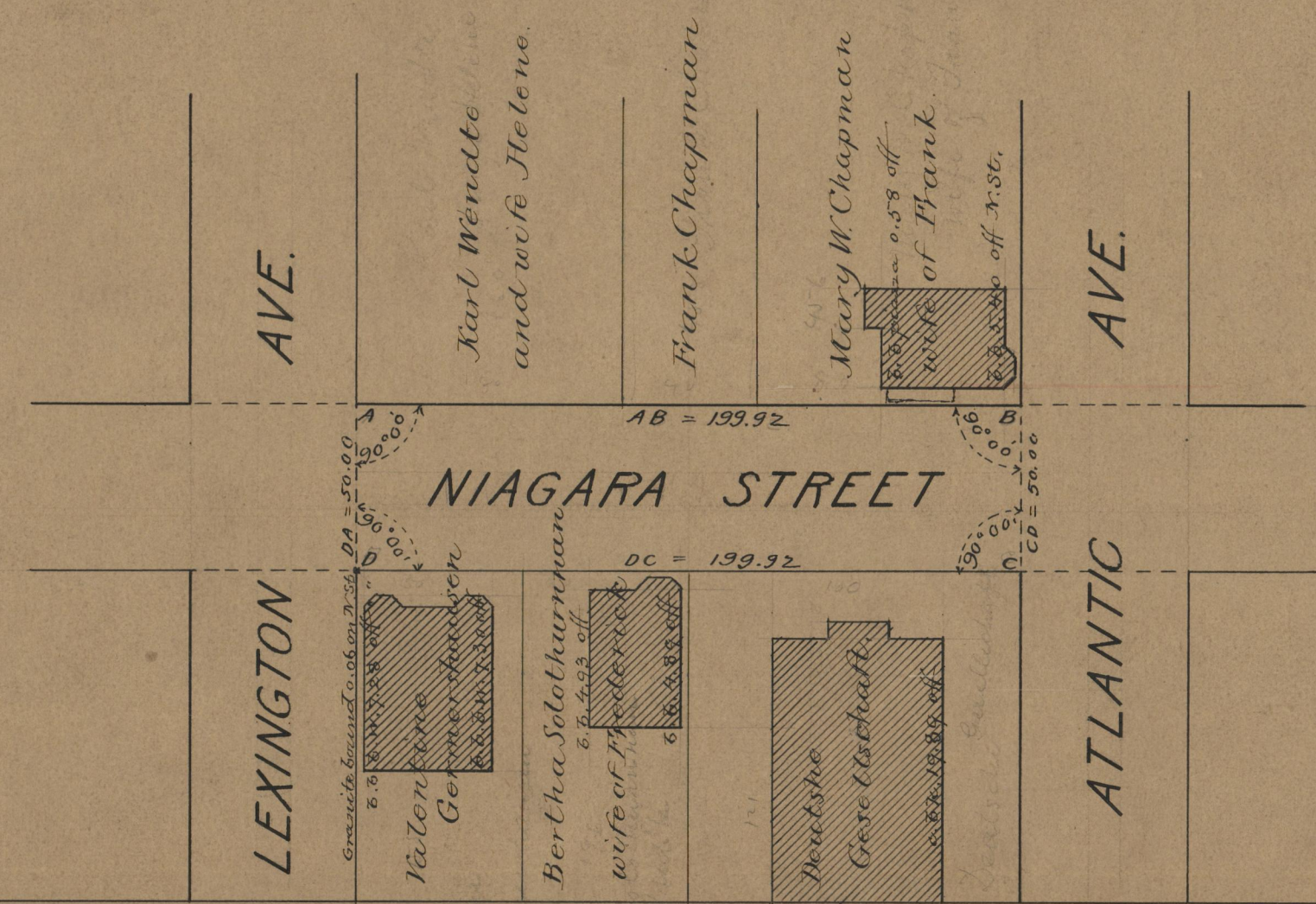
# PLAT OF NIA GARA STREET

FROM LEXINGTON AVE. TO ATLANTIC AVE.

SCALE 50 FEET PER INCH.

DECLARED A PUBLIC HIGHWAY  
BY RESOLUTION OF THE  
BOARD OF ALDERMEN,  
June 20, 1907.

Witness, \_\_\_\_\_  
City Clerk.



OFFICE No. 17487  
DRAWER " 71  
SHEET " A-17