

PROVIDENCE, R.I.
CITY ENGINEER'S OFFICE
STREET LINE DEPT.
July 2, 1907
035118

Note, The limits of the area declared a public highway are indicated by the letters ABCDEFGH.
The lines conform to the deeds in Deed Books 365, page 270, 383, page 219, 386, page 15, and 457, page 201, in the office of the Recorder of Deeds.

PLAT OF HUMBOLDT AVENUE

FROM WAYLAND AVE. TO ELTON ST.

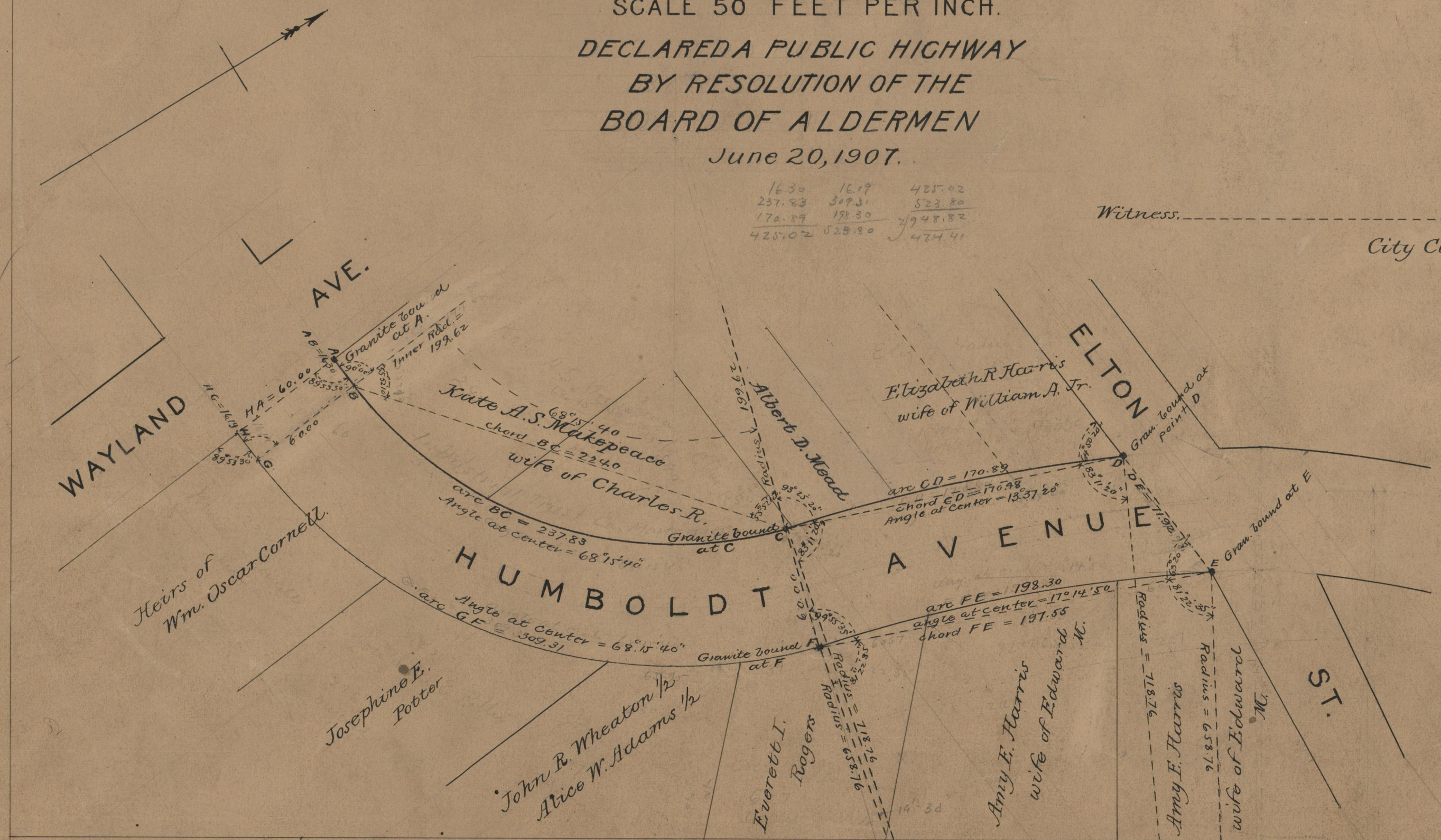
SCALE 50 FEET PER INCH.

DECLARED A PUBLIC HIGHWAY
BY RESOLUTION OF THE
BOARD OF ALDERMEN

June 20, 1907.

16.30	16.19	425.02
237.83	309.31	523.80
170.89	198.30	7948.82
425.02	523.80	474.41

Witness: _____
City Clerk.



OFFICE No. 17486
DRAWER 71
SHEET A-16