

PROVIDENCE, R.I.
CITY ENGINEER'S OFFICE
STREET LINE DEPT.
June 10, 1907
035077

Note, The limits of the area established as a public highway are indicated by the letters A B C D E F G.

The names of abutting owners correspond with the time when the petition was signed.

The line DE denotes the summit of the grade defined by the Board of Aldermen June 21, 1906.

PLAT OF HILLSIDE AVENUE

FROM N. MAIN ST. ABOUT 700 FT. EASTERLY
SCALE 50 FEET PER INCH.

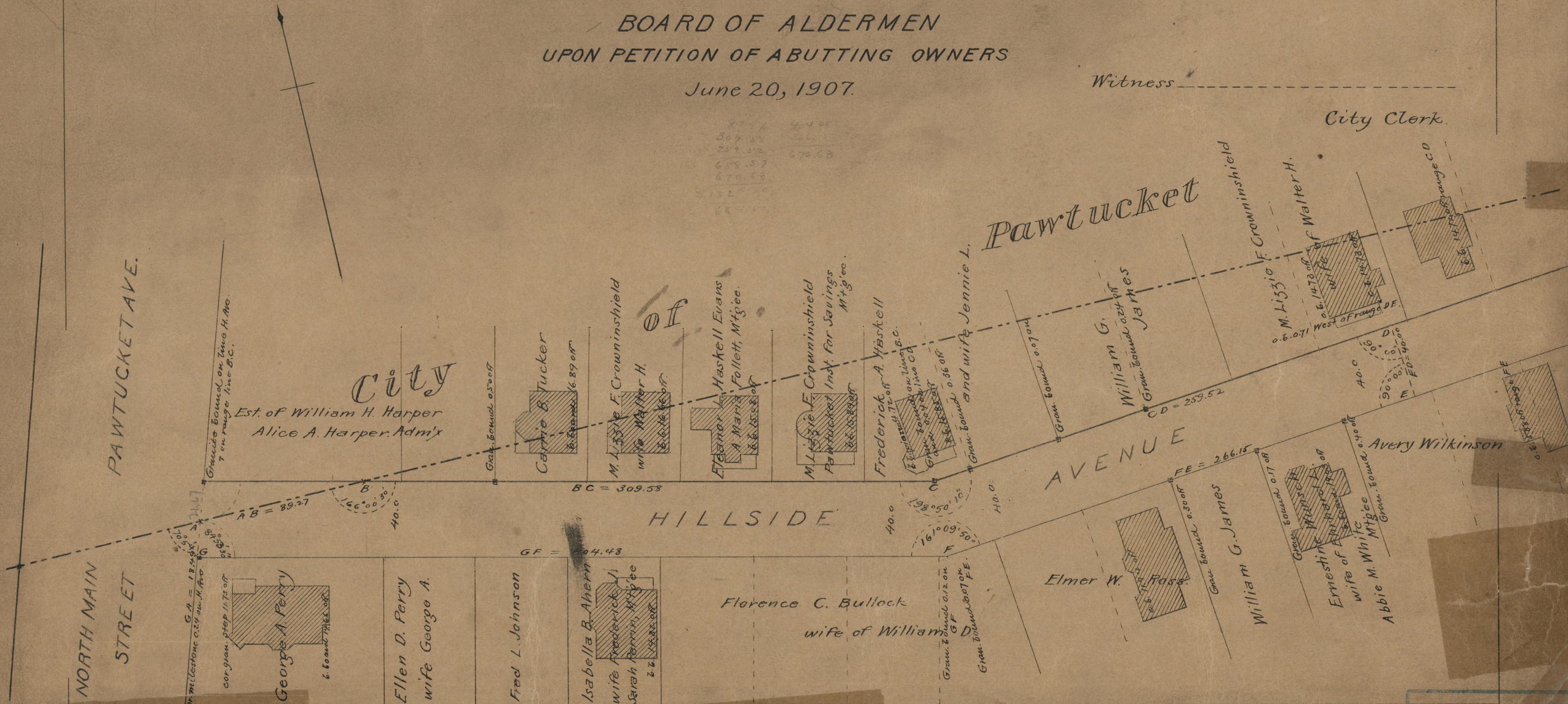
ESTABLISHED AS A PUBLIC HIGHWAY BY THE
BOARD OF ALDERMEN
UPON PETITION OF ABUTTING OWNERS

June 20, 1907.

Witness _____

City Clerk.

70.76 40.48
309.58 266.15
259.52 670.63
658.87
670.58
132.00
68.00



OFFICE No. 17480
DRAWER 71
SHEET A-14