

PROVIDENCE, R.I.
CITY ENGINEER'S OFFICE
STREET LINE DEPT.
June 10, 1907
035075

Note The limits of the area declared a public highway are indicated by the letters ABC.
Names of owners were obtained from the office of the Assessors of Taxes.

PLAT OF A PORTION OF ABBOTT STREET

AT JUNCTION WITH SEXTON ST.
SCALE 30 FEET PER INCH.

DECLARED A PUBLIC HIGHWAY BY THE
BOARD OF ALDERMEN
(BY REASON OF TWENTY YEARS USE.)

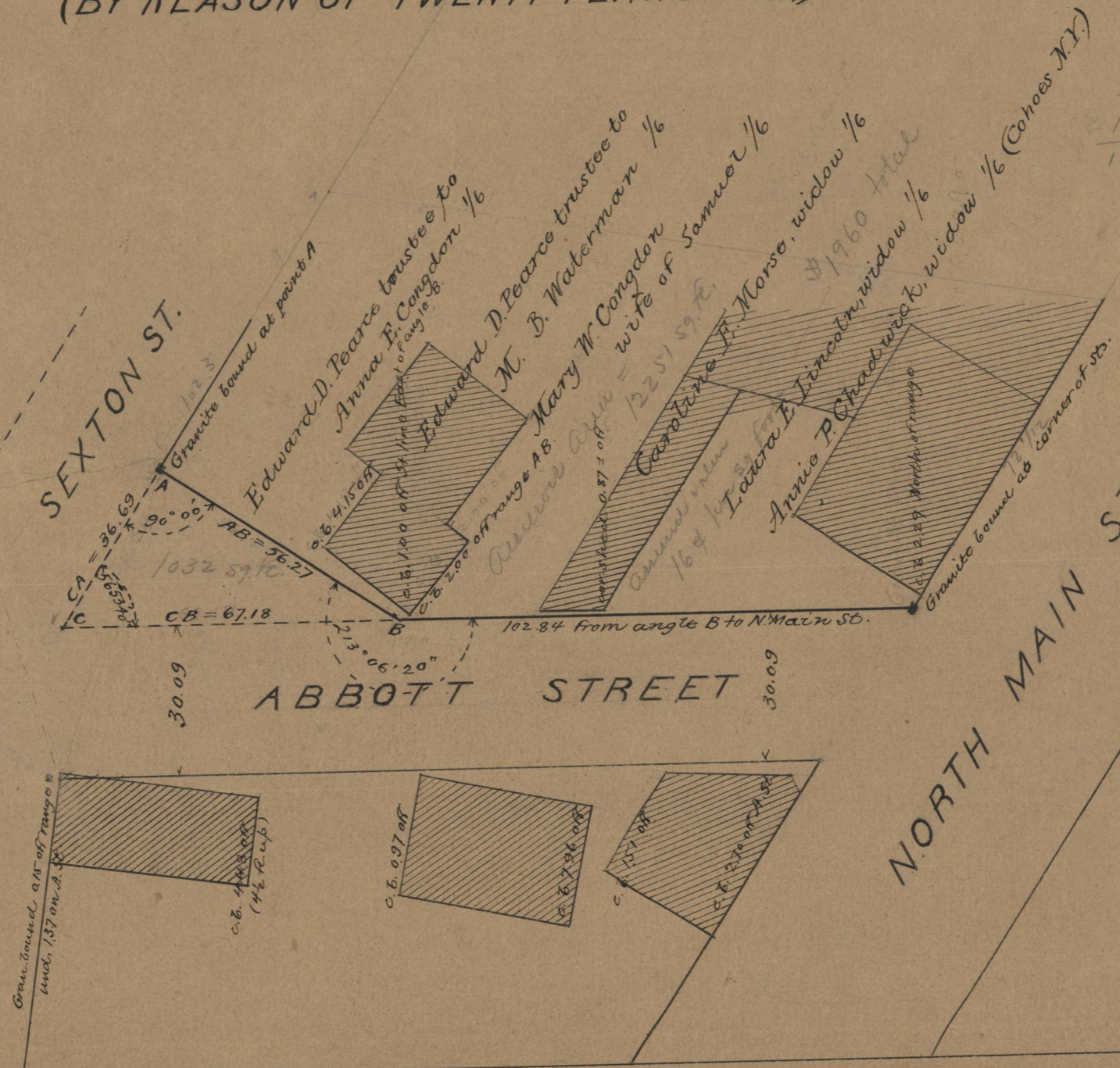


BRANCH AVE.

SEXTON ST.

ABBOTT STREET

NORTH MAIN ST.



12257
16
73506
12251
1960.16

OFFICE No. 17479
DRAWER 71
SHEET A-13