

F.B.B.-XXVII-151.

PROVIDENCE, R.I.  
CITY ENGINEER'S OFFICE  
STREET LINE DEPT.

April 3, 1907

034967

Note, The limits of the area declared a public highway are indicated by the letters A B C. The lines conform to the deed in Deed Book 481 at page 484 in the office of the Recorder of Deeds.

# PLAT OF A PARCEL OF LAND

AT THE SOUTHEASTERLY CORNER OF  
FRIENDSHIP AND BROAD STS.

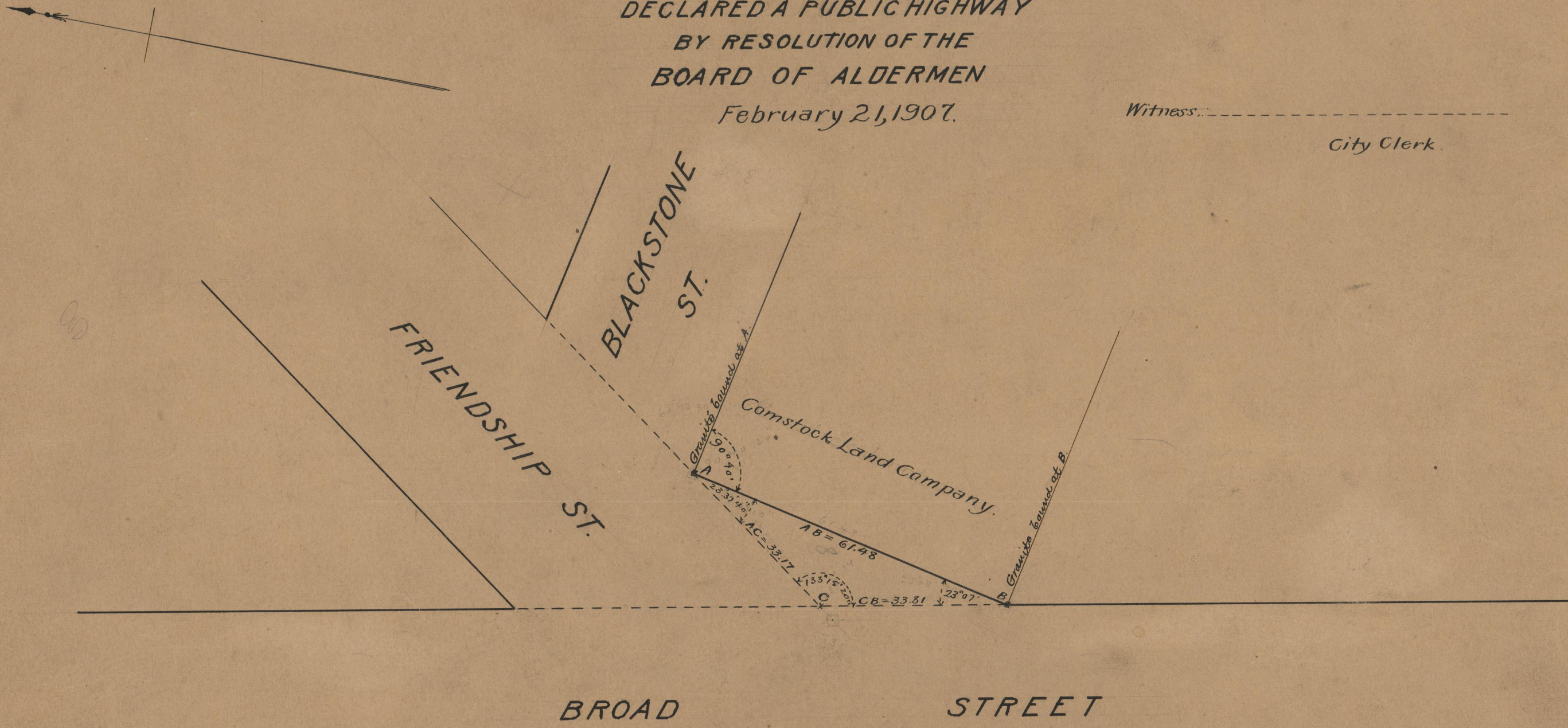
SCALE 20 FEET PER INCH.

DECLARED A PUBLIC HIGHWAY  
BY RESOLUTION OF THE  
BOARD OF ALDERMEN

February 21, 1907.

Witness: -----

City Clerk.



OFFICE No.	17454
DRAWER	71
SHEET	A-10