

LEXINGTON ST.

PLAT AND PROFILE OF
JOHNSTON STREET
FROM WEBSTER AVE. TO ROCKY HILL ROAD
DEC. 1887

HORIZONTAL SCALE 50 FT. PER INCH
VERTICAL " 5 " " "

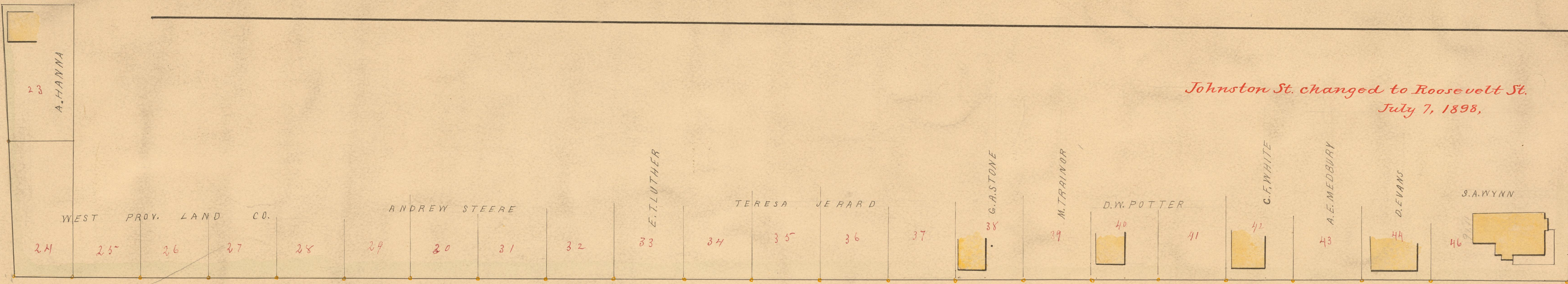
COMMITTEE
John Ed Bowen
Edgar Gifford
John Hatch

SURVEYED AND DRAWN
BY D.D. WATERMAN

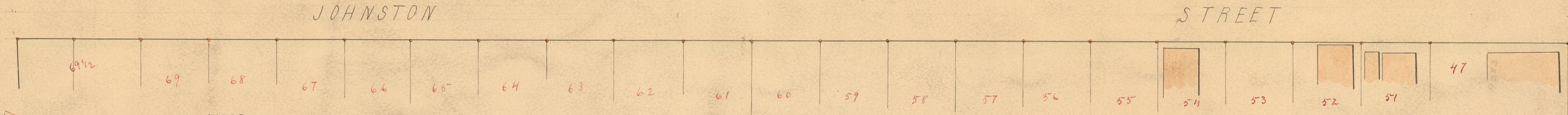
See Council record No 6 p. 90

Sept. 7th 11, 1888

ROCKY HILL ROAD
E.D. WATERMAN

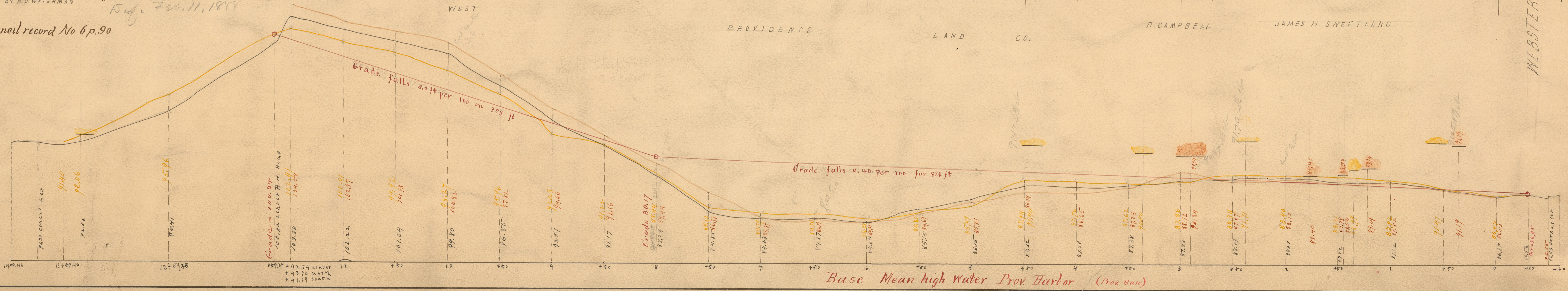


*Johnston St. changed to Roosevelt St.
July 7, 1898.*



WEST PROV. LAND CO. D. CAMPBELL JAMES H. SWEETLAND

WEBSTER AVE



PROVIDENCE, R. I.
CITY ENGINEER'S OFFICE
STREET LINE DEPT.
March 1, 1900.
029077

OFFICE No. 17163
DRAWER 70
SHEET 93