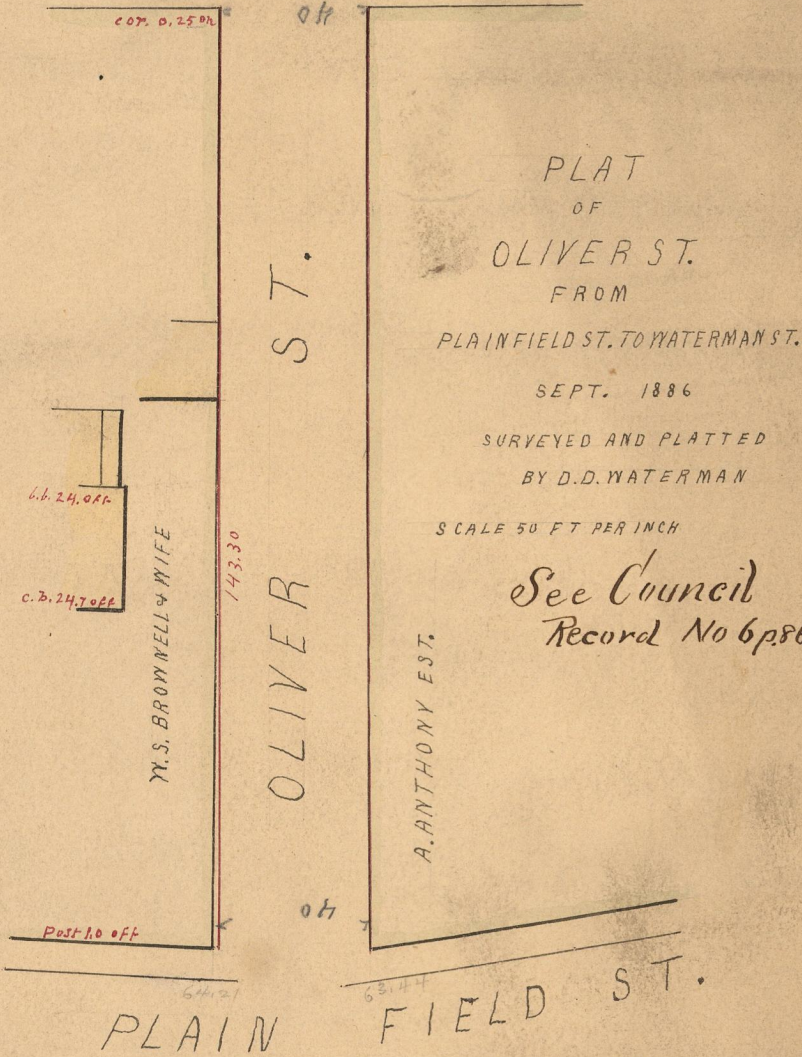


PROVIDENCE
CITY ENGINEER
STREET LINE DEPT.

March 1, 1900

WATERMAN ST.

029078



PLAT
OF
OLIVER ST.
FROM

PLAINFIELD ST. TO WATERMAN ST.

SEPT. 1886

SURVEYED AND PLATTED
BY D.D. WATERMAN

SCALE 50 FT PER INCH

See Council
Record No 6p86

COMMITTEE

George W. White
Horace Clarke
Simon S. Page

Oliver St. changed to Hobart St.

July 7, 1898

Hobart St. changed to Gifford St.

Dec 1, 1898

OFFICE No. 14162
DRAWER 40
SHEET 22