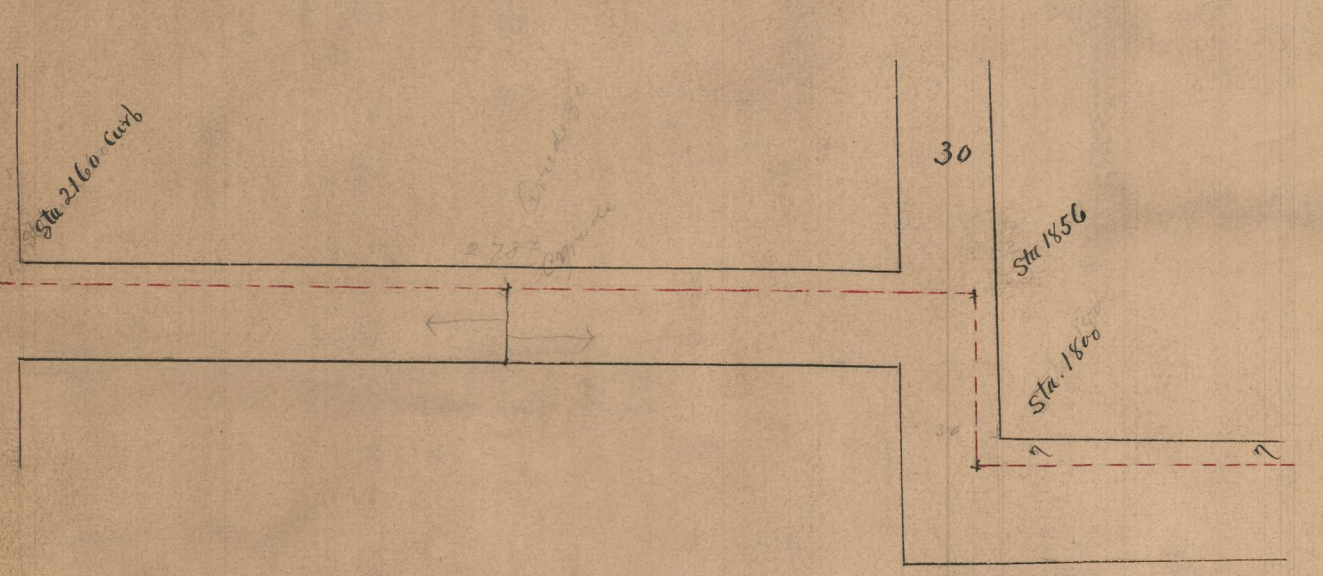


July 7, 1917. City Solicitor verbally decided that this grade of Merino street is defined.

Plan at Plainfield St End



Profile of Merino St. from HARTFORD AVE to PLAINFIELD ST.

Horizontal Scale 60' = 1 inch
Vertical " 10' = 1 "

Commissioners { James T. H. Redfern
William F. King
Richard Lavery
appointed by the Hon. Town Council of the Town of Johnston March 8th 1895
R. S. Powers Engineer

