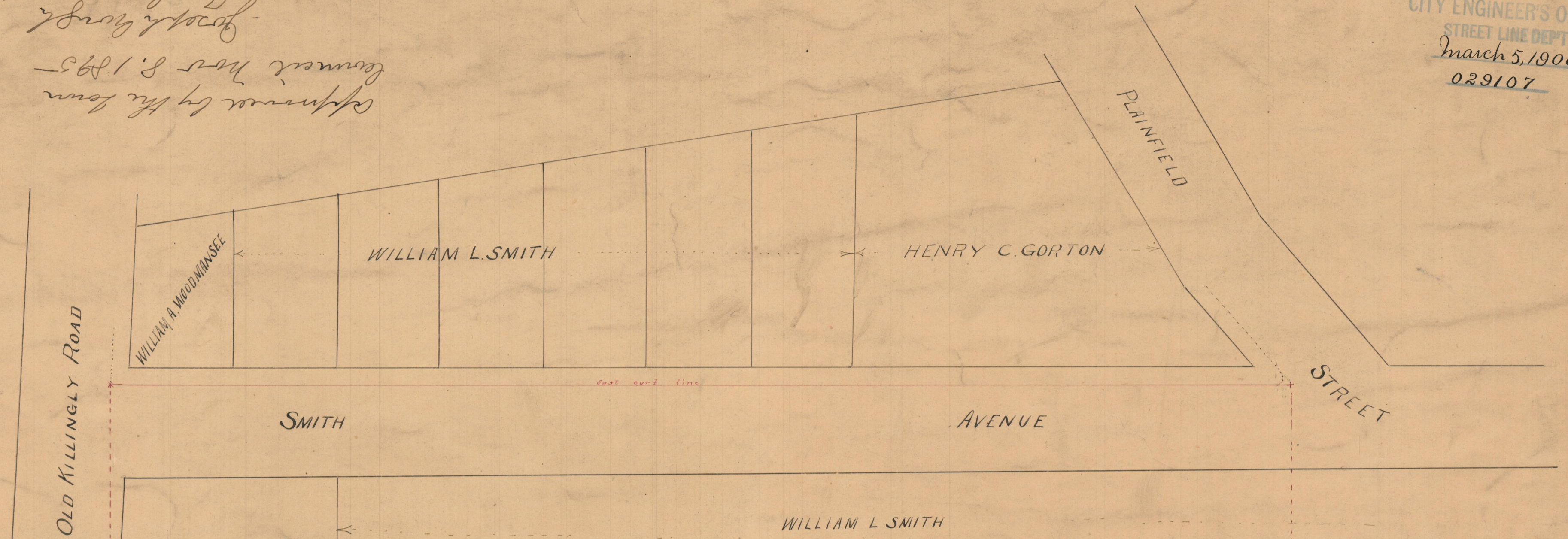


*Approved by the Town Council Nov 8, 1895
 John Walch
 Town Clerk*



Plan and Profile of SMITH AVENUE

as laid out by

John Walch

*Smith Ave. changed to Mildred St.
 July 7, 1898
 Mildred St. changed to Duxbury St.
 Dec. 1, 1898*

Committee appointed by the Hon. TOWN COUNCIL
 of the TOWN of JOHNSTON Oct 22, 1895.
 P. S. Mowry Engineer

Horizontal Scale 40 feet = 1 inch
 Vertical " 10 " " "

