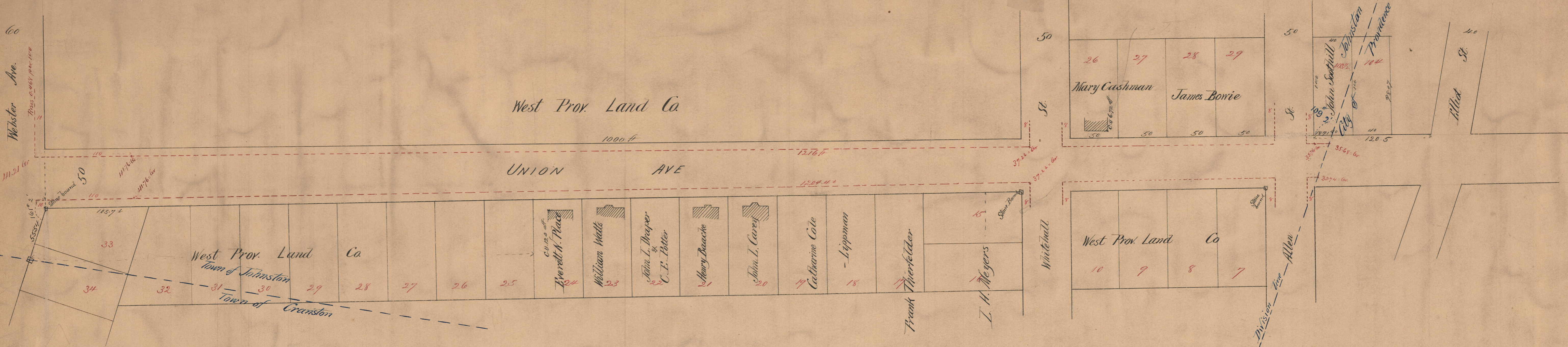


PROVIDENCE, R.I.  
 CITY ENGINEER'S OFFICE  
 STREET LINE DEPT.  
 March 5, 1900  
 029125

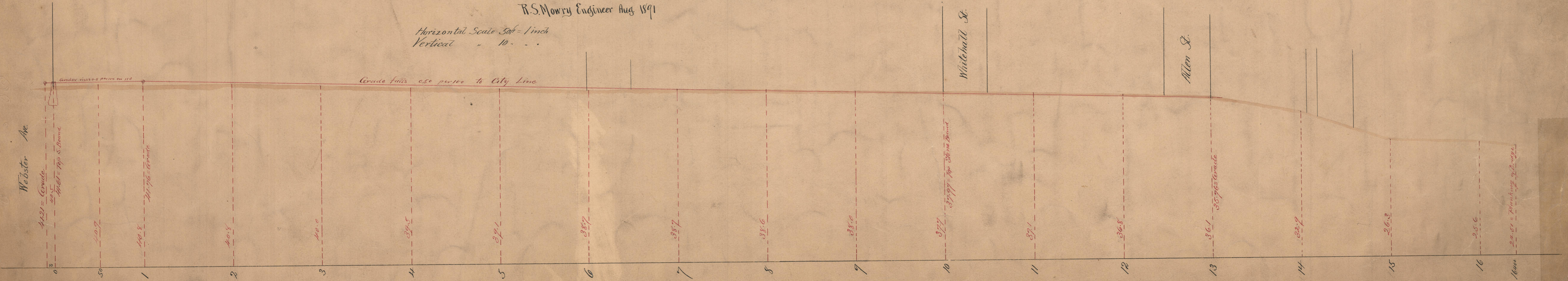


See Council Record No 6 page 423  
 October 8<sup>th</sup> 1891

PLAN and PROFILE of UNION AV.  
 from Webster Ave. easterly to City Line  
 as laid out by John A Coffin  
 Frank Hanley  
 John W. Waters  
 Committee appointed by Hon. Town Council of Town of Johnston 1891

R.S. Mowry Engineer Aug 1891

Horizontal Scale 50ft = 1 inch  
 Vertical " 10 " "



OFFICE No. 17097  
 DRAWER " 70  
 SHEET " 20