

Plat of LABAN and WATERMAN STREETS  
 Between Mill St and Rocky Hill Road  
 as laid out by

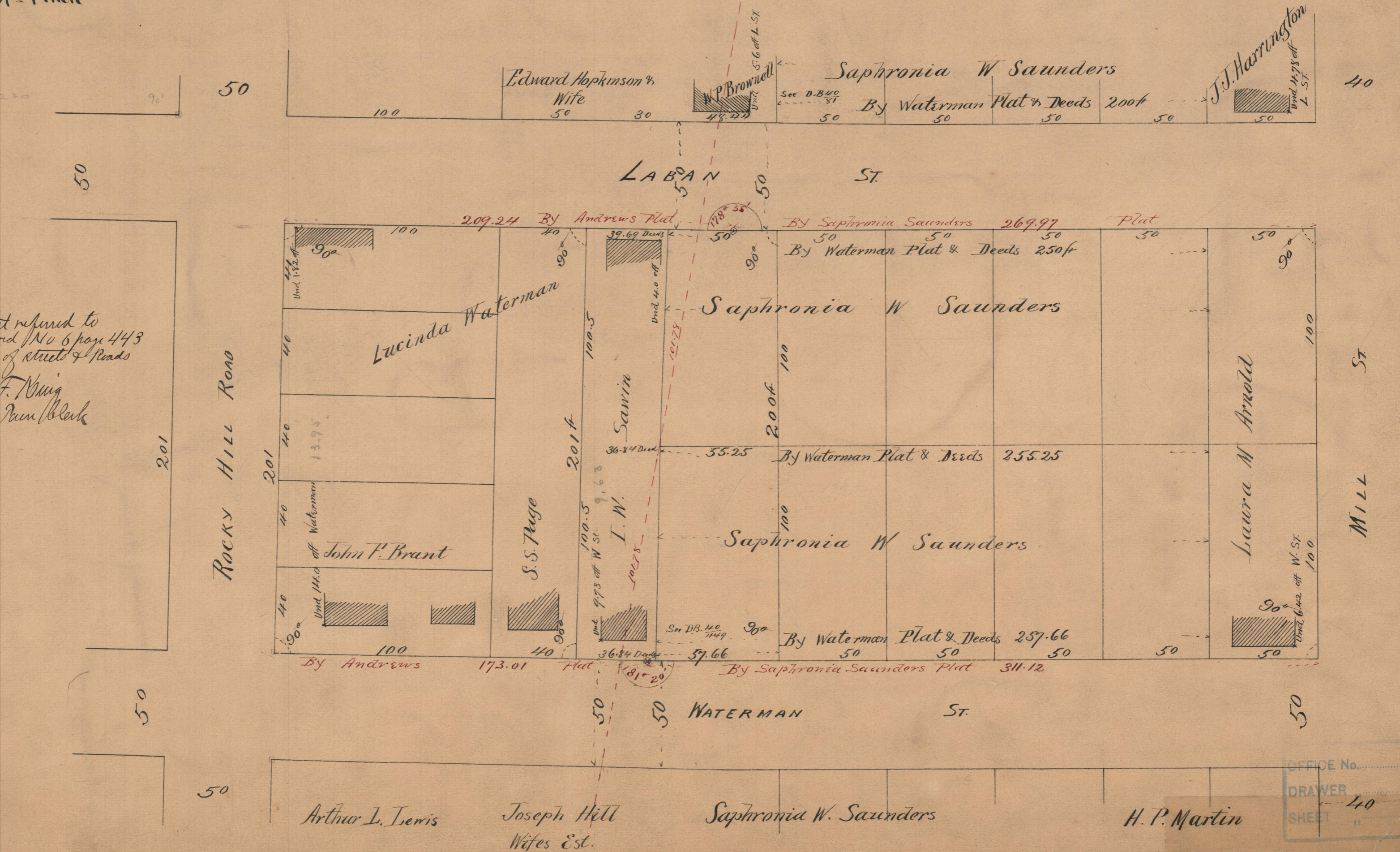
WALDO M PLACE,  
 GILBERT R. PARKER  
 HENRY C. CARPENTER

Committee appointed by the Hon. Town Council of the Town of Johnston May 14<sup>th</sup> 1891

R.S. Mowry Engineer

Scale 40ft = 1 inch

37.70



Note - This is the plat referred to  
 in Council record No 6 page 443  
 and in Book of streets & Roads  
 page 131  
 Wm F. King  
 Town Clerk

OFFICE No.	14088
DRAWER	40
SHEET	18