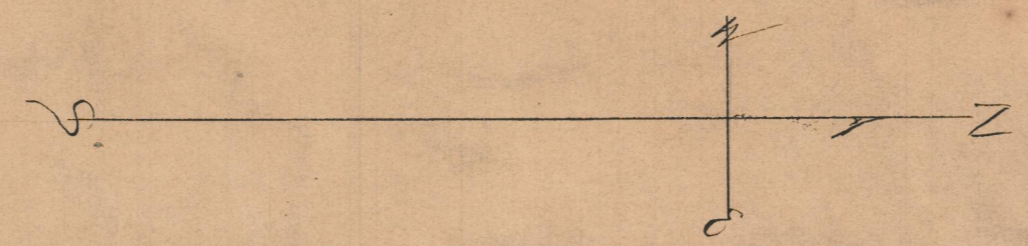
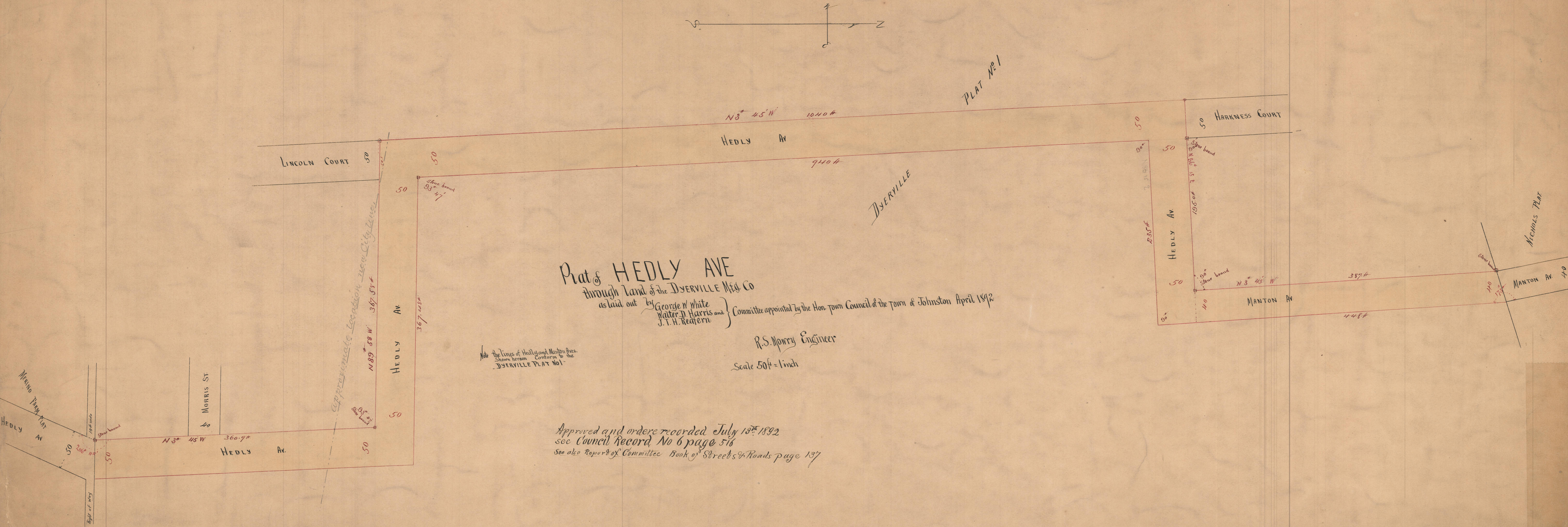


Hedly Ave (south of new city line) changed to Ophelia St. July 7, 1898.



PLAT No. 1



Plat of HEDLY AVE
 through Land of the DSEVILLE Mfg Co
 as laid out by George W White
 Walter D Harris and J. T. H. Redfern } Committee appointed by the Hon. town Council of the town of Johnston April 1892

R. S. Morry Engineer
 Scale 50ft = 1 inch

Note: The lines of Hedly and Manton Aves. shown hereon conform to the DSEVILLE PLAT No. 1.

Approved and order recorded July 13th 1892
 see Council Record No 6 page 516
 See also Report of Committee Book of Streets & Roads page 137