

Plan and Profile of Roger Williams Avenue as laid out by

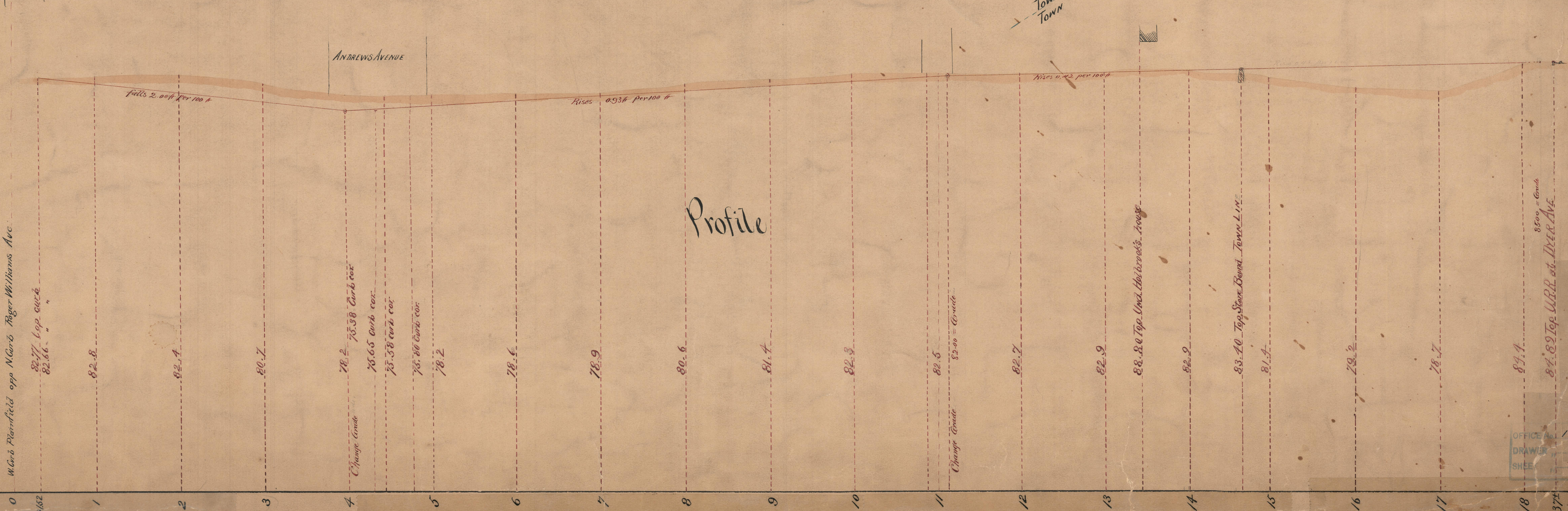
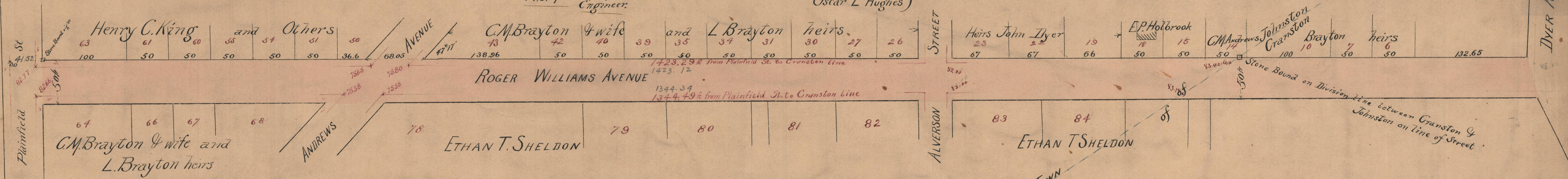
Roger Williams Ave. changed to Sylvia Ave. July 7, 1898.
Sylvia Ave. changed to Farmington Ave. Dec. 1, 1898.

PROVIDENCE, R.I.
CITY ENGINEER'S OFFICE
STREET LINE DEPT.
March 6, 1900
029134

Horizontal Scale 60ft = 1 inch
Vertical " 10 " " "

R.S. Mowry
Engineer

John A. Coffin }
Frank L. Hanly } Committee appointed by the Hon. Town Council of Town of Johnston May 12th 1892.
Oscar L. Hughes }



OFFICE No. 14081
DRAWN 40
SHEET 11