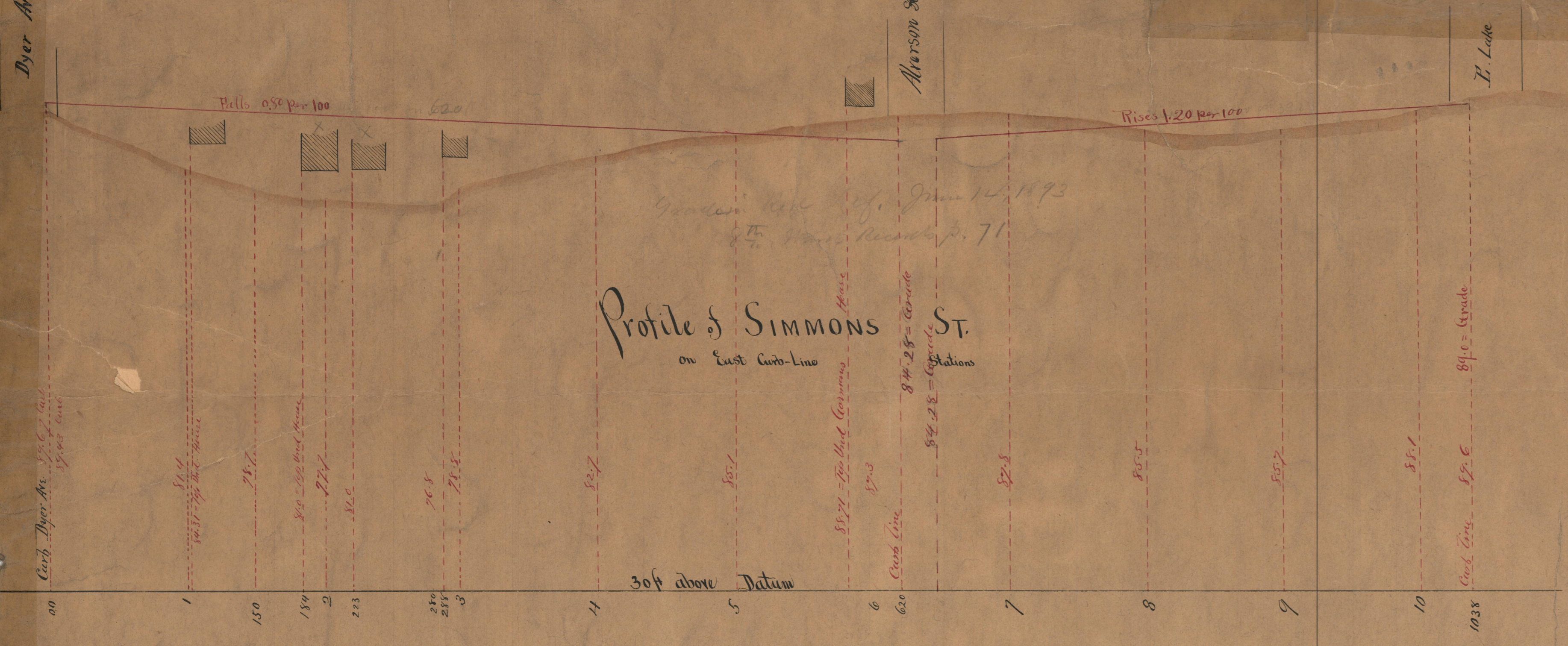


Profile of SIMMONS ST.  
 on East Curb-Line



Profile of SOUTH LAKE, SPRAGUE, SIMMONS and portion of ANDREWS AVE

George W. White  
 Charles H. Coffin  
 Henry C. King  
 Committee appointed by the Hon. Town Council  
 of the Town of Johnston May 10th 1893

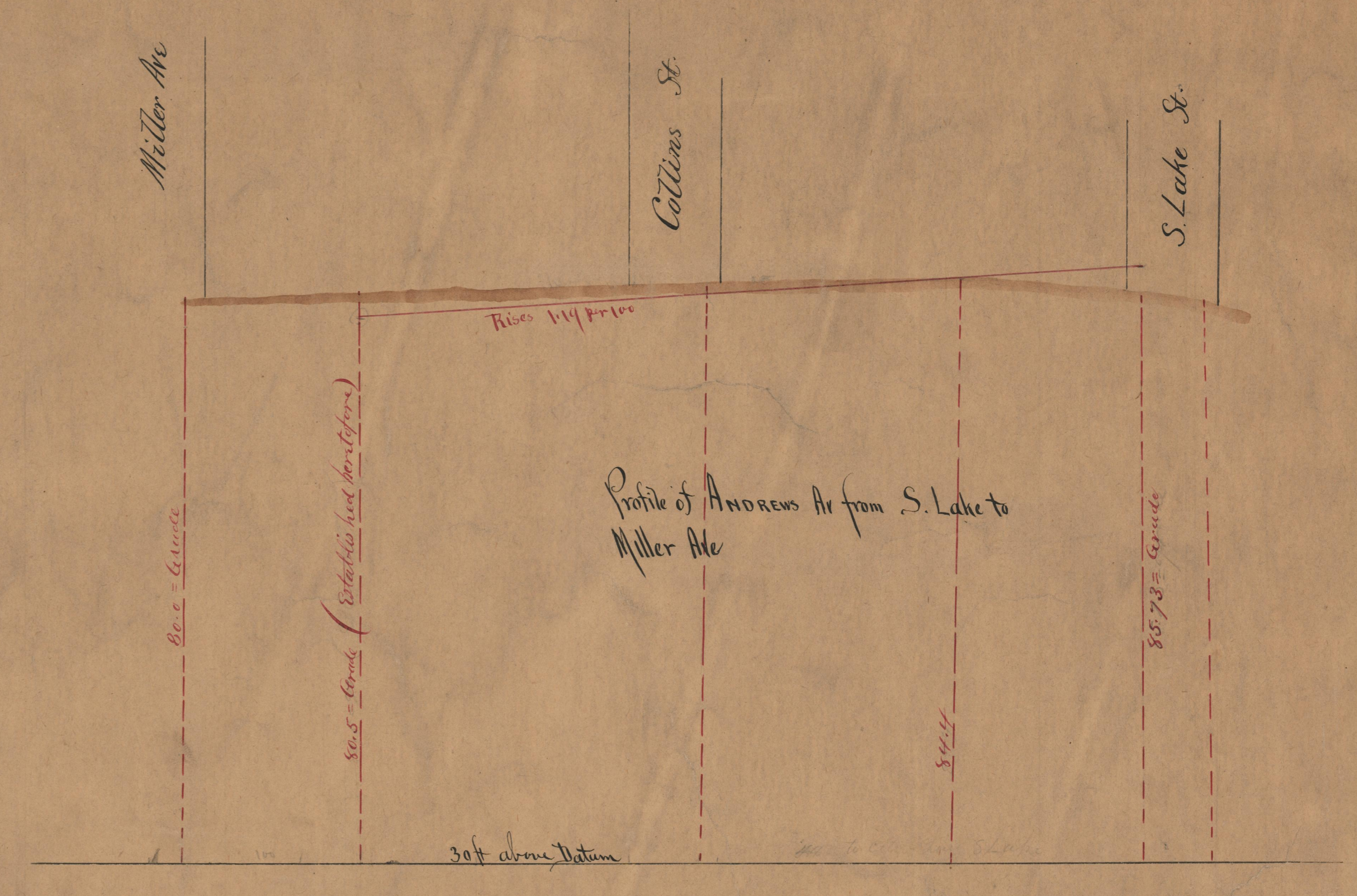
R. S. Morry Engineer  
 Horizontal Scale 60ft = 1 inch  
 Vertical " 10 " 1 "

S. Lake St. changed to Murray St.  
 Sprague St. changed to Sophia St.  
 Andrews Ave changed to Silver Lake Ave.  
 July 7, 1898.

Profile of SPRAGUE ST.  
 Stations on East Curb Line



Profile of ANDREWS AVE from S. LAKE to MILLER AVE



PROFILE SOUTH LAKE NOW MURRAY ST.  
 Stations on West Curb Line



Grade in red Defined by Town Council of Johnston June 14, 1893.  
 8th Ward Records page 71